



HYDRAULIC TOOL HOLDER SERIES

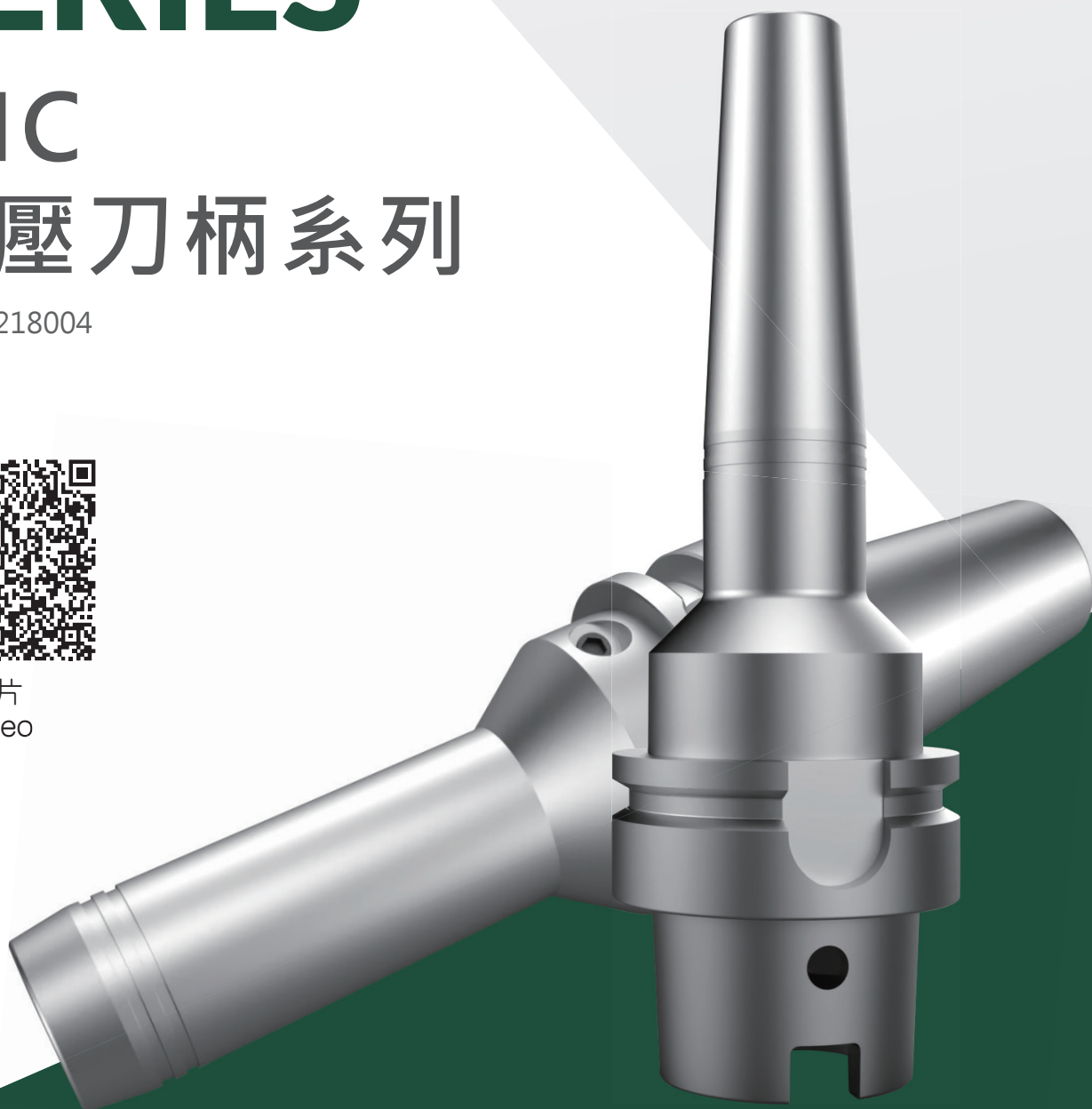
LHC

液壓刀柄系列

No. 250218004



影片
Video



減震性能

優良的減震性能，可確保獲得最佳的工件表面質量。

液壓系統具備良好的液態結構，具有減震功能。刀具刃口上的微觀崩刃得以避免，從而表現最佳的加工效果，大大延長了刀具的使用壽命，降低了相關成本。

Anti-vibration Performance

Excellent vibration absorption performance ensures optimal workpiece surface quality.

The advanced hydraulic system is engineered with a precision liquid framework that delivers superior damping capabilities, effectively minimizing microscopic chipping on the cutting edge. This innovation enhances machining performance, maximizes tool longevity, and significantly reduces operational costs, ensuring exceptional efficiency and reliability.

液壓刀柄與市場上其他系列刀柄比較表

Comparison Chart: Hydraulic Toolholder vs. Other Toolholder Types

	LHC 液壓刀柄 LHC Hydraulic Tool Holder	ER 刀柄 ER Collet Chuck	側固刀柄 Side Lock Holder	燒結刀柄 Shrink-Fit Chuck
精確度 Run-Out Accuracy	++ 0.003mm (2.5D)	- 0.01-0.02mm	- 0.01mm	+ 0.005mm
穩定性 Process Reliability	++	-	-	-
扭力 (Ø20mm) Torque (Ø20mm)	++ 900Nm	○ 220Nm	++ 刀具需削平處理 Form-Fit Clamping	+ 420Nm
徑向剛度 Radial Rigidity	++	-	++	-
減震 Damping	++	○	-	-
筒夾通用性 Collet Compatibility	+	++ (筒夾) (Collet)	-	-
夾持柄徑通用性 (d) Clamping Versatility (d)	++	++	-	-
操作技術與使用簡易性 Handling and Operability	++	+	+	-
防塵設計 Dirt Resistance	++	-	+	-
長度調整精確度 Exact Length Pre-Adjustment	++	-	-	-
其他周邊工具 Necessary Peripheral Equipments	++ 一般扳手 Hex Key	○ 勾形扳手 + 安裝工具 Hook Wrench + Assembly Tool	○ 一般扳手 + 安裝工具 Hex Key + Assembly Tool	- 燒結機 Shrink-Fit Machine

++ 佳 + 好 ○ 普通 - 不好
++ Very good + Good ○ Neutral - Bad

標準液壓刀柄系列 Standard Hydraulic Series

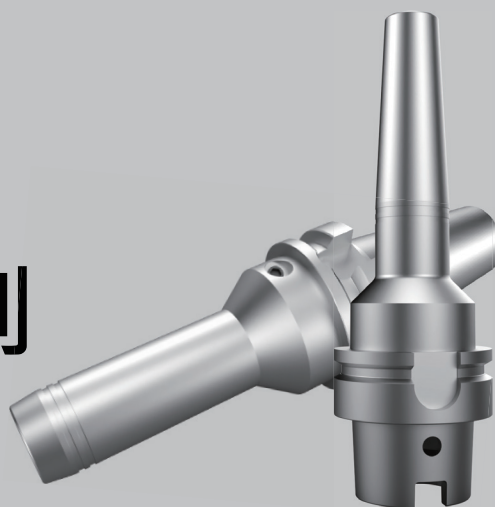




- ★ 在直徑為20mm時，最大夾持扭矩高達900Nm最小扭矩520Nm 以上。
 - ★ 在直徑為32mm時，最大夾持扭矩高達2000Nm最小扭矩900Nm 以上。
 - ★ 同心度和重覆精度在0.003mm 以內(2.5D)。
 - ★ 刀柄可用於多種加工方式，銑、鑽、鉸等。
 - ★ 提高刀具100%的壽命，極大的節省耗材成本。
 - ★ 無需特殊工具即可快速換刀，使用一般六角板手。
 - ★ 結構完全密封，防塵與防切削液，使用更長壽命。
 - ★ 標準動平衡 G2.5 25000 RPM。
-
- ★ At a 20mm diameter, the maximum clamping torque reaches 900Nm, with a minimum torque of 520Nm or more.
 - ★ At a 32mm diameter, the maximum clamping torque reaches 2000Nm, with a minimum torque of 900Nm or more.
 - ★ Concentricity and repeatability within 0.003mm (2.5D).
 - ★ Suitable for various machining operations, including milling, drilling, and reaming.
 - ★ Enhances tool lifespan by 100%, significantly reducing consumable costs.
 - ★ A standard hex wrench for fast and effortless tool changes.
 - ★ Fully enclosed design prevents dust, chips, and coolant intrusion, ensuring long-lasting durability.
 - ★ Standard dynamic balancing G2.5 at 25,000 RPM, delivering superior stability and precision.

LHC/R

加長液壓刀柄系列

EXTENDED HYDRAULIC TOOL HOLDER SERIES



類型 Type	偏擺精度 Runout Accuracy	內孔 Inner Bore	主軸 Spindle	長度 Length
 LHC/R R Type	Ø6-20mm 3倍長: 3 µm Ø25-32mm 3倍長: 5 µm 不限孔徑150長以上: 7 µm Ø6-20mm, 3x length: 3µm Ø25-32mm, 3x length: 5µm ≥150mm length, any bore size: 7µm	6~32 mm	SBT(BBT)、BT 、HSK、CAT 、DAT	70~150 mm
 LHC/RS 斜度加長型 Tapered Extended Type	Ø6-20mm 3倍長: 3 µm Ø6-20mm, 3x Length: 3µm	6~20 mm	BT、 HSK50/63/100 DAT40	110~190 mm

-均含動平衡，使六角扳手鎖固

-Includes dynamic balancing, allowing secure tightening with a hex wrench.

Ø6 mm	16Nm	Ø16 mm	185Nm
Ø8 mm	23Nm	Ø18 mm	280Nm
Ø10 mm	45Nm	Ø20 mm	430Nm
Ø12 mm	95Nm	Ø25 mm	650Nm
Ø14 mm	110Nm	Ø32 mm	900Nm

-建議使用h6刀具，獲得最佳夾持力

-刀具可搭配鑽頭、銑刀、鉸刀、PCD成型銑刀使用

-Recommended to use h6 tolerance tools for optimal clamping force.

-Compatible with drills, end mills, reamers, and PCD profile milling cutters.

LHC 液壓刀柄系列

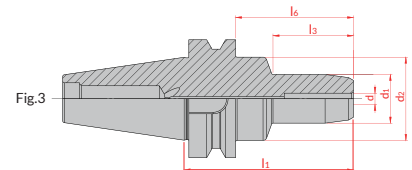
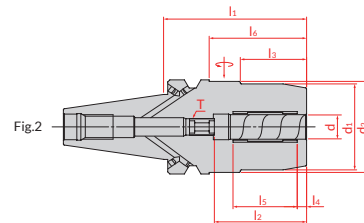
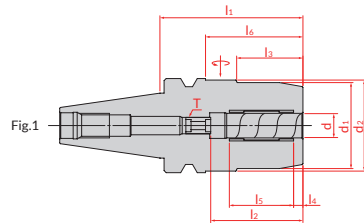
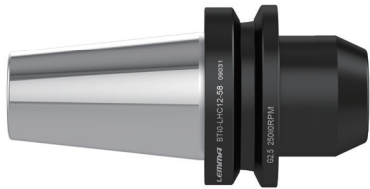
HYDRAULIC TOOL HOLDER SERIES



BT/LHC 液壓刀柄

HYDRAULIC TOOL HOLDER

同心度和重覆精度在 0.003mm 以內 (2.5D)
Concentricity and Repeatability within 0.003mm (2.5D)



特點 Feature

- 小徑液壓刀柄：外徑降低干涉，無需使用減壓徑套筒
- 直徑為 20mm 時，最大夾持扭矩高達 900Nm 最小扭矩 520Nm 以上。
- 直徑為 32mm 時，最大夾持扭矩高達 2000Nm 最小扭矩 900Nm 以上。

- Small-Diameter Hydraulic Toolholder: Reduced outer diameter minimizes interference, eliminating the need for reduction sleeves.
- Diameter 20mm, maximum clamping torque up to 900Nm, minimum torque above 520Nm.
- Diameter 32mm, maximum clamping torque up to 2000Nm, minimum torque above 900Nm.

規格 Spec.	l ₁	l ₂	l ₃	l ₄	l ₅	l ₆	d	d ₁	d ₂	T	扳手 Wrench	扭力值 (N.m) Torque	Fig.	重量 (KGS) Weight
BT30-LHC12-69	69	46	32	4.5	47	23	12	42	44.5	M8-1.0P	PT5	110	1	0.60
BT30-LHC20-90	90	51	50	5	68	39	20	42	44.5	M8-1.0P	PT5	400	1	0.90
BT40-LHC6-90	90.5	37	43	3.6	20.5	63	6	26	44.5	M5-1.0P	PT5	-	3	1.40
BT40-LHC8-90	90.5	37	44.5	3.6	20.5	63	8	28	44.5	M6-1.0P	PT5	-	3	1.40
BT40-LHC10-90	90.5	41	44.5	3.6	20.5	63	10	30	44.5	M8-1.0P	PT5	-	3	1.40
BT40-LHC12-58	58	46	-	4.5	31	31	12	42	-	M8-1.0P	PT5	110	2	1.20
BT40-LHC16-72	72.5	51	-	5	37	45.5	16	49.25	-	M8-1.0P	PT5	350	2	1.30
BT40-LHC20-72	72.5	51	-	5	37	45.5	20	49.25	-	M8-1.0P	PT5	520	2	1.40
BT40-LHC32-120	120	61	-	6	44	80	32	62.5	-	M8-1.0P	PT6	900	2	2.38
BT50-LHC20-83	83.5	51	-	5	37	45.5	20	49.25	-	M8-1.0P	PT5	520	2	4.10
BT50-LHC32-90	90	61	-	6	44	52	32	72	-	M8-1.0P	PT6	900	2	4.60

LHC 液壓刀柄系列

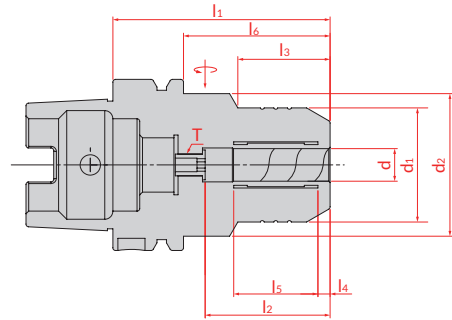
HYDRAULIC TOOL HOLDER SERIES



HSK/LHC 扭力型液壓刀柄

HSK/LHC TORQUE HYDRAULIC TOOL HOLDER

同心度和重覆精度在 0.003mm 以內 (2.5D)
Concentricity and Repeatability within 0.003mm (2.5D)



特點 Feature

- 小徑液壓刀桿：外徑降低干涉，無需使用減壓徑套筒
- 直徑為 20mm 時，最大夾持扭矩高達 900Nm 最小扭矩 520Nm 以上。
- 直徑為 32mm 時，最大夾持扭矩高達 2000Nm 最小扭矩 900Nm 以上。
- Small-Diameter Hydraulic Toolholder: Reduced outer diameter minimizes interference, eliminating the need for reduction sleeves.
- Diameter 20mm, maximum clamping torque up to 900Nm, minimum torque above 520Nm.
- Diameter 32mm, maximum clamping torque up to 2000Nm, minimum torque above 900Nm.

規格 Spec.	l ₁	l ₂	l ₃	l ₄	l ₅	l ₆	d	d ₁	d ₂	T	扳手 Wrench	扭力值 (N.m) Torque	重量 (KGS) Weight
HSK63AxLHC6-70	70	37	25	-	21	43	6	26	50	M5	PT5	-	-
HSK63AxLHC8-70	70	37	25	-	21	43	8	28	50	M6	PT5	-	-
HSK63AxLHC10-80	80	41	35	-	31	53	10	30	50	M8-1.0P	PT5	-	-
HSK63AxLHC12-80	80	46	34	4.5	31	54	12	42	52.5	M8-1.0P	PT5	110	1.25
HSK63AxLHC16-80	80	51	-	5	37	54	16	52.5	-	M8-1.0P	PT5	350	1.30
HSK63AxLHC20-80	80	51	-	5	37	54	20	52.5	-	M8-1.0P	PT5	520	1.32
HSK63AxLHC32-120	120	61	-	6	44	94.05	32	62.5	-	M8-1.0P	PT6	900	2.66
HSK100AxLHC20-90	90	51	-	5	37	61	20	52.5	-	M8-1.0P	PT5	520	2.80
HSK100AxLHC32-100	100	61	-	6	44	71	32	72	-	M8-1.0P	PT6	900	3.80

LHC 雙面拘束液壓刀柄系列

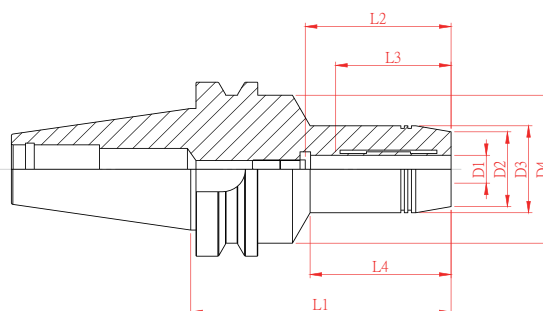
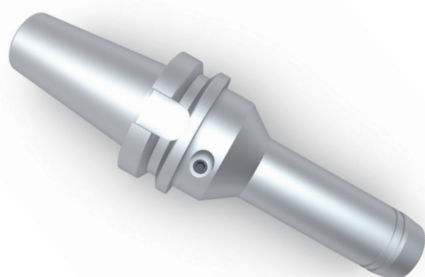
DUAL DRIVE HYDRAULIC TOOL HOLDER SERIES



SBT/LHC 雙面拘束液壓刀柄

Dual Drive HYDRAULIC TOOL HOLDER

R 系列
R Series



特點 Feature

- 標準動平衡 : G2.5 25000rpm

-Dynamic Balancing G2.5 at 25000rpm

規格 Spec.	D1	D2	D3	D4	L1	L2	L3	L4	鎖固螺絲 Clamping screw	扳手 Wrench	鎖固螺絲建 議扭力值 Torque	調整螺絲 Adjustment screw	微調螺絲 扳手 Wrench	重量 (KGS) Weight
SBT30-LHC6R-70	6	23	26	44.5	70	37.5	27.5	28	LHC-M8-1.25P-14L	PT4	5.5Nm.	AJ-M5*0.5	PT2.5	0.7
SBT30-LHC8R-70	8	25	28	44.5	70	37.5	27.5	28	LHC-M8-1.25P-14L	PT4	5.5Nm.	AJ-M6*1.0	PT3	0.8
SBT30-LHC10R-75	10	27	30	44.5	75	42.5	32.5	36	LHC-M8-1.25P-14L	PT4	5.5Nm.	AJ-M8*1.0	PT4	0.8
SBT30-LHC12R-75	12	29	32	44.5	75	47.5	37.5	36	LHC-M8-1.25P-14L	PT4	5.5Nm.	AJ-M8*1.0	PT5	0.9
SBT30-LHC14R-85	14	31	34	44.5	85	47.5	37.5	44	LHC-M8-1.25P-14L	PT4	5.5Nm.	AJ-M8*1.0	PT5	0.9
SBT30-LHC16R-90	16	35	38	44.5	90	52.5	42.5	48	LHC-M8-1.25P-14L	PT4	5.5Nm.	AJ-M12*1.0	PT6	1.0
SBT30-LHC18R-90	18	37	40	44.5	90	52.5	42.5	48	LHC-M8-1.25P-14L	PT4	5.5Nm.	AJ-M12*1.0	PT6	1.0
SBT30-LHC20R-90	20	39	42	44.5	90	52.5	42.5	48	LHC-M8-1.25P-14L	PT4	5.5Nm.	AJ-M12*1.0	PT6	1.1
SBT40-LHC6R-90	6	23	26	50	90	37.5	27.5	44	LHC-M8-1.25P-14L	PT4	5.5Nm.	AJ-M5*0.5	PT2.5	1.5
SBT40-LHC8R-90	8	25	28	50	90	37.5	27.5	44	LHC-M8-1.25P-14L	PT4	5.5Nm.	AJ-M6*1.0	PT3	1.5
SBT40-LHC10R-90	10	27	30	50	90	42.5	32.5	44	LHC-M8-1.25P-14L	PT4	5.5Nm.	AJ-M8*1.0	PT4	1.5
SBT40-LHC12R-90	12	29	32	50	90	47.5	37.5	44	LHC-M8-1.25P-14L	PT4	5.5Nm.	AJ-M8*1.0	PT5	1.5
SBT40-LHC14R-90	14	31	34	50	90	47.5	37.5	44	LHC-M8-1.25P-14L	PT4	5.5Nm.	AJ-M8*1.0	PT5	1.6
SBT40-LHC16R-90	16	35	38	50	90	52.5	42.5	48	LHC-M8-1.25P-14L	PT4	5.5Nm.	AJ-M12*1.0	PT6	1.6
SBT40-LHC18R-90	18	37	40	50	90	52.5	42.5	48	LHC-M8-1.25P-14L	PT4	5.5Nm.	AJ-M12*1.0	PT6	1.6
SBT40-LHC20R-90	20	39	42	50	90	52.5	42.5	48	LHC-M10-1.5P-14L	PT5	5.5Nm.	AJ-M12*1.0	PT6	1.6
SBT40-LHC25R-100	25	53	57	-	100	61	51	-	LHC-M10-1.5P-14L	PT5	5.5Nm.	AJ-M12*1.0	PT6	2.2
SBT40-LHC32R-105	32	58	63	-	105	65	55	-	LHC-M10-1.5P-14L	PT5	5.5Nm.	AJ-M12*1.0	PT6	2.4

LHC 雙面拘束液壓刀柄系列

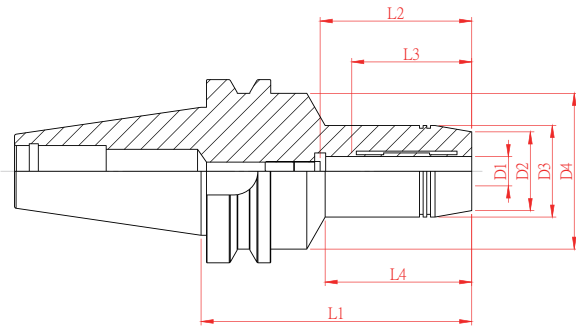
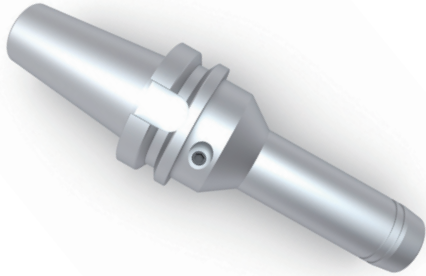
DUAL DRIVE HYDRAULIC TOOL HOLDER SERIES



SBT/LHC 雙面拘束液壓刀柄

Dual Drive HYDRAULIC TOOL HOLDER

R 系列
R Series



特點 Feature

- 標準動平衡 : G2.5 25000rpm

-Dynamic Balancing G2.5 at 25000rpm

規格 Spec.	D1	D2	D3	D4	L1	L2	L3	L4	鎖固螺絲 Clamping screw	扳手 Wrench	鎖固螺絲建 議扭力值 Torque	調整螺絲 Adjustment screw	微調螺絲 扳手 Wrench	重量 (KGS) Weight
SBT50-LHC6R-90	6	23	26	50	90	37.5	27.5	32	LHC-M8-1.25P-14L	PT4	5.5Nm.	AJ-M5*0.5	PT2.5	4.2
SBT50-LHC6R-140	6	23	26	50	140	37.5	27.5	44	LHC-M8-1.25P-14L	PT4	5.5Nm.	AJ-M5*0.5	PT2.5	4.8
SBT50-LHC8R-90	8	25	28	50	90	37.5	27.5	32	LHC-M8-1.25P-14L	PT4	5.5Nm.	AJ-M6*1.0	PT3	4.2
SBT50-LHC8R-140	8	25	28	50	140	37.5	27.5	44	LHC-M8-1.25P-14L	PT4	5.5Nm.	AJ-M6*1.0	PT3	4.8
SBT50-LHC10R-90	10	27	30	50	90	42.5	32.5	32	LHC-M8-1.25P-14L	PT4	5.5Nm.	AJ-M8*1.0	PT4	4.3
SBT50-LHC10R-140	10	27	30	50	140	42.5	32.5	44	LHC-M8-1.25P-14L	PT4	5.5Nm.	AJ-M8*1.0	PT4	4.9
SBT50-LHC12R-90	12	29	32	50	90	47.5	37.5	32	LHC-M8-1.25P-14L	PT4	5.5Nm.	AJ-M8*1.0	PT5	4.3
SBT50-LHC12R-140	12	29	32	50	140	47.5	37.5	44	LHC-M8-1.25P-14L	PT4	5.5Nm.	AJ-M8*1.0	PT5	4.9
SBT50-LHC14R-90	14	31	34	50	90	47.5	37.5	32	LHC-M8-1.25P-14L	PT4	5.5Nm.	AJ-M8*1.0	PT5	4.3
SBT50-LHC14R-140	14	31	34	50	140	47.5	37.5	44	LHC-M8-1.25P-14L	PT4	5.5Nm.	AJ-M8*1.0	PT5	4.9
SBT50-LHC16R-90	16	35	38	50	90	52.5	42.5	32	LHC-M8-1.25P-14L	PT4	5.5Nm.	AJ-M12*1.0	PT6	4.4
SBT50-LHC16R-140	16	35	38	50	140	52.5	42.5	48	LHC-M8-1.25P-14L	PT4	5.5Nm.	AJ-M12*1.0	PT6	5.0
SBT50-LHC18R-90	18	37	40	50	90	52.5	42.5	32	LHC-M8-1.25P-14L	PT4	5.5Nm.	AJ-M12*1.0	PT6	4.4
SBT50-LHC18R-140	18	37	40	50	140	52.5	42.5	48	LHC-M8-1.25P-14L	PT4	5.5Nm.	AJ-M12*1.0	PT6	5.0
SBT50-LHC20R-90	20	39	42	50	90	52.5	42.5	32	LHC-M10-1.5P-14L	PT5	5.5Nm.	AJ-M12*1.0	PT6	4.4
SBT50-LHC20R-140	20	39	42	50	140	52.5	42.5	48	LHC-M10-1.5P-14L	PT5	5.5Nm.	AJ-M12*1.0	PT6	5.0
SBT50-LHC25R-105	25	53	57	-	105	61	51	-	LHC-M10-1.5P-14L	PT5	5.5Nm.	AJ-M12*1.0	PT6	4.9
SBT50-LHC25R-150	25	53	57	-	150	61	51	-	LHC-M10-1.5P-14L	PT5	5.5Nm.	AJ-M12*1.0	PT6	5.5
SBT50-LHC32R-115	32	58	63	-	115	65	55	-	LHC-M10-1.5P-14L	PT5	5.5Nm.	AJ-M12*1.0	PT6	5.1
SBT50-LHC32R-150	32	58	63	-	150	65	55	-	LHC-M10-1.5P-14L	PT5	5.5Nm.	AJ-M12*1.0	PT6	5.9

LHC 液壓刀柄系列

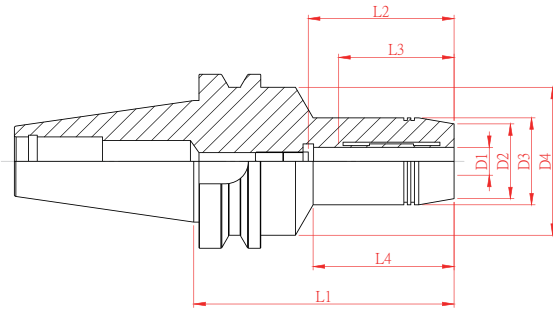
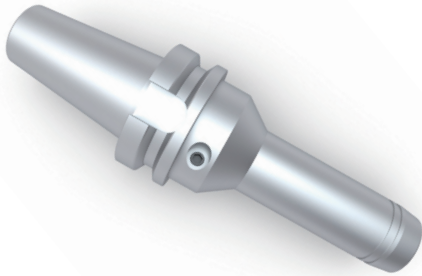
HYDRAULIC TOOL HOLDER SERIES



BT/LHC 液壓刀柄

HYDRAULIC TOOL HOLDER

R 系列
R Series



特點 Feature

- 標準動平衡 : G2.5 25000rpm

-Dynamic Balancing G2.5 at 25000rpm

規格 Spec.	D1	D2	D3	D4	L1	L2	L3	L4	鎖固螺絲 Clamping screw	扳手 Wrench	鎖固螺絲建議扭力值 Torque	調整螺絲 Adjustment screw	微調螺絲扳手 Wrench	重量 (KGS) Weight
BT30-LHC6R-70	6	23	26	44.5	70	37.5	27.5	28	LHC-M8-1.25P-14L	PT4	5.5Nm.	AJ-M5*0.5	PT2.5	0.7
BT30-LHC8R-70	8	25	28	44.5	70	37.5	27.5	28	LHC-M8-1.25P-14L	PT4	5.5Nm.	AJ-M6*1.0	PT3	0.8
BT30-LHC10R-75	10	27	30	44.5	75	42.5	32.5	36	LHC-M8-1.25P-14L	PT4	5.5Nm.	AJ-M8*1.0	PT4	0.8
BT30-LHC12R-75	12	29	32	44.5	75	47.5	37.5	36	LHC-M8-1.25P-14L	PT4	5.5Nm.	AJ-M8*1.0	PT5	0.9
BT30-LHC14R-85	14	31	34	44.5	85	47.5	37.5	44	LHC-M8-1.25P-14L	PT4	5.5Nm.	AJ-M8*1.0	PT5	0.9
BT30-LHC16R-90	16	35	38	44.5	90	52.5	42.5	48	LHC-M8-1.25P-14L	PT4	5.5Nm.	AJ-M12*1.0	PT6	1.0
BT30-LHC18R-90	18	37	40	44.5	90	52.5	42.5	48	LHC-M8-1.25P-14L	PT4	5.5Nm.	AJ-M12*1.0	PT6	1.0
BT30-LHC20R-90	20	39	42	44.5	90	52.5	42.5	48	LHC-M8-1.25P-14L	PT4	5.5Nm.	AJ-M12*1.0	PT6	1.0
BT40-LHC6R-65	6	23	26	50	65	37.5	27.5	23	LHC-M8-1.25P-14L	PT4	5.5Nm.	AJ-M5*0.5	PT2.5	1.3
BT40-LHC6R-90	6	23	26	50	90	37.5	27.5	44	LHC-M8-1.25P-14L	PT4	5.5Nm.	AJ-M5*0.5	PT2.5	1.4
BT40-LHC6R-140	6	23	26	50	140	37.5	27.5	44	LHC-M8-1.25P-14L	PT4	5.5Nm.	AJ-M5*0.5	PT2.5	2.2
BT40-LHC8R-65	8	25	28	50	65	37.5	27.5	23	LHC-M8-1.25P-14L	PT4	5.5Nm.	AJ-M6*1.0	PT3	1.3
BT40-LHC8R-90	8	25	28	50	90	37.5	27.5	44	LHC-M8-1.25P-14L	PT4	5.5Nm.	AJ-M6*1.0	PT3	1.5
BT40-LHC8R-140	8	25	28	50	140	37.5	27.5	44	LHC-M8-1.25P-14L	PT4	5.5Nm.	AJ-M6*1.0	PT3	2.3
BT40-LHC10R-65	10	27	30	50	65	42.5	32.5	23	LHC-M8-1.25P-14L	PT4	5.5Nm.	AJ-M8*1.0	PT4	1.3
BT40-LHC10R-90	10	27	30	50	90	42.5	32.5	44	LHC-M8-1.25P-14L	PT4	5.5Nm.	AJ-M8*1.0	PT4	1.5
BT40-LHC10R-140	10	27	30	50	140	42.5	32.5	44	LHC-M8-1.25P-14L	PT4	5.5Nm.	AJ-M8*1.0	PT4	2.3
BT40-LHC12R-65	12	29	32	50	65	47.5	37.5	23	LHC-M8-1.25P-14L	PT4	5.5Nm.	AJ-M8*1.0	PT5	1.3
BT40-LHC12R-90	12	29	32	50	90	47.5	37.5	44	LHC-M8-1.25P-14L	PT4	5.5Nm.	AJ-M8*1.0	PT5	1.5
BT40-LHC12R-140	12	29	32	50	140	47.5	37.5	44	LHC-M8-1.25P-14L	PT4	5.5Nm.	AJ-M8*1.0	PT5	2.3
BT40-LHC14R-65	14	31	34	50	65	47.5	37.5	23	LHC-M8-1.25P-14L	PT4	5.5Nm.	AJ-M8*1.0	PT5	1.4
BT40-LHC14R-90	14	31	34	50	90	47.5	37.5	44	LHC-M8-1.25P-14L	PT4	5.5Nm.	AJ-M8*1.0	PT5	1.6
BT40-LHC14R-140	14	31	34	50	140	47.5	37.5	44	LHC-M8-1.25P-14L	PT4	5.5Nm.	AJ-M8*1.0	PT5	2.4

LHC 液壓刀柄系列

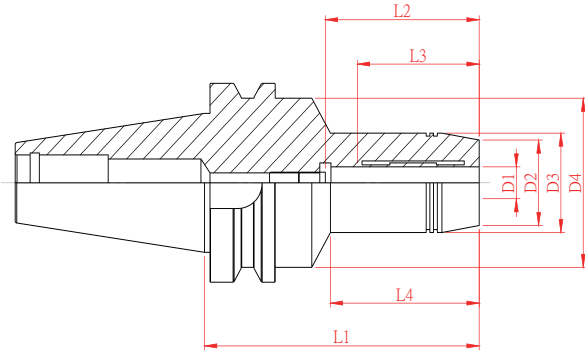
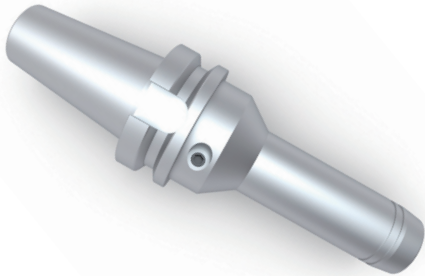
HYDRAULIC TOOL HOLDER SERIES



BT/LHC 液壓刀柄

HYDRAULIC TOOL HOLDER

R 系列
R Series



特點 Feature

- 標準動平衡 : G2.5 25000rpm

-Dynamic Balancing G2.5 at 25000rpm

規格 Spec.	D1	D2	D3	D4	L1	L2	L3	L4	鎖固螺絲 Clamping screw	扳手 Wrench	鎖固螺絲建 議扭力值 Torque	調整螺絲 Adjustment screw	微調螺 絲扳手 Wrench	重量 (KGS) Weight
BT40-LHC16R-65	16	35	38	50	65	52.5	42.5	23	LHC-M8-1.25P-14L	PT4	5.5Nm.	AJ-M12*1.0	PT6	1.4
BT40-LHC16R-90	16	35	38	50	90	52.5	42.5	48	LHC-M8-1.25P-14L	PT4	5.5Nm.	AJ-M12*1.0	PT6	1.6
BT40-LHC16R-140	16	35	38	50	140	52.5	42.5	48	LHC-M8-1.25P-14L	PT4	5.5Nm.	AJ-M12*1.0	PT6	2.4
BT40-LHC18R-75	18	37	40	50	75	52.5	42.5	30	LHC-M8-1.25P-14L	PT4	5.5Nm.	AJ-M12*1.0	PT6	1.5
BT40-LHC18R-90	18	37	40	50	90	52.5	42.5	48	LHC-M8-1.25P-14L	PT4	5.5Nm.	AJ-M12*1.0	PT6	1.7
BT40-LHC18R-140	18	37	40	50	140	52.5	42.5	48	LHC-M8-1.25P-14L	PT4	5.5Nm.	AJ-M12*1.0	PT6	2.4
BT40-LHC20R-75	20	39	42	50	75	52.5	42.5	30	LHC-M10-1.5P-14L	PT5	5.5Nm.	AJ-M12*1.0	PT6	1.5
BT40-LHC20R-90	20	39	42	50	90	52.5	42.5	48	LHC-M10-1.5P-14L	PT5	5.5Nm.	AJ-M12*1.0	PT6	1.7
BT40-LHC20R-140	20	39	42	50	140	52.5	42.5	48	LHC-M10-1.5P-14L	PT5	5.5Nm.	AJ-M12*1.0	PT6	2.4
BT40-LHC25R-100	25	53	57	50	100	61	51	-	LHC-M10-1.5P-14L	PT5	5.5Nm.	AJ-M12*1.0	PT6	2.2
BT40-LHC25R-135	25	53	57	50	135	61	51	-	LHC-M10-1.5P-14L	PT5	5.5Nm.	AJ-M12*1.0	PT6	2.9
BT40-LHC32R-105	32	58	62	50	105	65	55	-	LHC-M10-1.5P-14L	PT5	5.5Nm.	AJ-M12*1.0	PT6	2.4
BT40-LHC32R-135	32	58	62	50	135	65	55	-	LHC-M10-1.5P-14L	PT5	5.5Nm.	AJ-M12*1.0	PT6	3.1

LHC 液壓刀柄系列

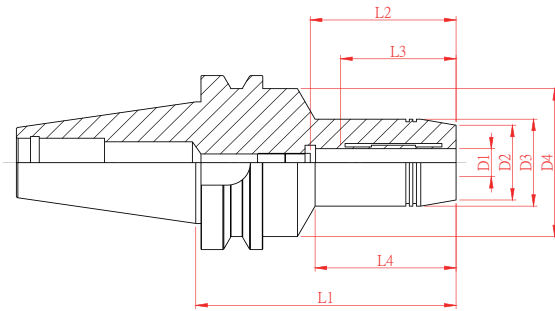
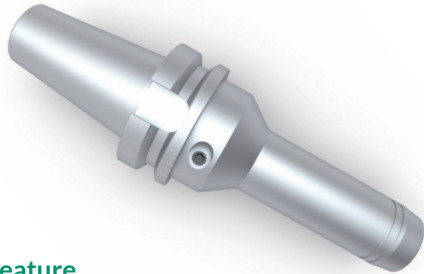
HYDRAULIC TOOL HOLDER SERIES



BT/LHC 液壓刀柄

HYDRAULIC TOOL HOLDER

R 系列
R Series



特點 Feature

- 標準動平衡 : G2.5 25000rpm

-Dynamic Balancing G2.5 at 25000rpm

規格 Spec.	D1	D2	D3	D4	L1	L2	L3	L4	鎖固螺絲 Clamping screw	扳手 Wrench	鎖固螺絲建議扭力值 Torque	調整螺絲 Adjustment screw	微調螺絲 扳手 Wrench	重量 (KGS) Weight
BT50-LHC6R-90	6	23	26	50	90	37.5	27.5	32	LHC-M8-1.25P-14L	PT4	5.5Nm.	AJ-M5*0.5	PT2.5	4.2
BT50-LHC6R-120	6	23	26	50	120	37.5	27.5	44	LHC-M8-1.25P-14L	PT4	5.5Nm.	AJ-M5*0.5	PT2.5	4.5
BT50-LHC6R-140	6	23	26	50	140	37.5	27.5	44	LHC-M8-1.25P-14L	PT4	5.5Nm.	AJ-M5*0.5	PT2.5	4.8
BT50-LHC8R-90	8	25	28	50	90	37.5	27.5	32	LHC-M8-1.25P-14L	PT4	5.5Nm.	AJ-M6*1.0	PT3	4.2
BT50-LHC8R-120	8	25	28	50	120	37.5	27.5	44	LHC-M8-1.25P-14L	PT4	5.5Nm.	AJ-M6*1.0	PT3	4.5
BT50-LHC8R-140	8	25	28	50	140	37.5	27.5	44	LHC-M8-1.25P-14L	PT4	5.5Nm.	AJ-M6*1.0	PT3	4.8
BT50-LHC10R-90	10	27	30	50	90	42.5	32.5	32	LHC-M8-1.25P-14L	PT4	5.5Nm.	AJ-M8*1.0	PT4	4.2
BT50-LHC10R-120	10	27	30	50	120	42.5	32.5	44	LHC-M8-1.25P-14L	PT4	5.5Nm.	AJ-M8*1.0	PT4	4.5
BT50-LHC10R-140	10	27	30	50	140	42.5	32.5	44	LHC-M8-1.25P-14L	PT4	5.5Nm.	AJ-M8*1.0	PT4	4.8
BT50-LHC12R-90	12	29	32	50	90	47.5	37.5	32	LHC-M8-1.25P-14L	PT4	5.5Nm.	AJ-M8*1.0	PT5	4.3
BT50-LHC12R-120	12	29	32	50	120	47.5	37.5	44	LHC-M8-1.25P-14L	PT4	5.5Nm.	AJ-M8*1.0	PT5	4.5
BT50-LHC12R-140	12	29	32	50	140	47.5	37.5	44	LHC-M8-1.25P-14L	PT4	5.5Nm.	AJ-M8*1.0	PT5	4.8
BT50-LHC14R-90	14	31	34	50	90	47.5	37.5	32	LHC-M8-1.25P-14L	PT4	5.5Nm.	AJ-M8*1.0	PT5	4.3
BT50-LHC14R-120	14	31	34	50	120	47.5	37.5	44	LHC-M8-1.25P-14L	PT4	5.5Nm.	AJ-M8*1.0	PT5	4.6
BT50-LHC14R-140	14	31	34	50	140	47.5	37.5	44	LHC-M8-1.25P-14L	PT4	5.5Nm.	AJ-M8*1.0	PT5	4.8
BT50-LHC16R-90	16	35	38	50	90	52.5	42.5	32	LHC-M8-1.25P-14L	PT4	5.5Nm.	AJ-M12*1.0	PT6	4.3
BT50-LHC16R-120	16	35	38	50	120	52.5	42.5	48	LHC-M8-1.25P-14L	PT4	5.5Nm.	AJ-M12*1.0	PT6	4.6
BT50-LHC16R-140	16	35	38	50	140	52.5	42.5	48	LHC-M8-1.25P-14L	PT4	5.5Nm.	AJ-M12*1.0	PT6	4.9
BT50-LHC18R-90	18	37	40	50	90	52.5	42.5	32	LHC-M8-1.25P-14L	PT4	5.5Nm.	AJ-M12*1.0	PT6	4.4
BT50-LHC18R-120	18	37	40	50	120	52.5	42.5	48	LHC-M8-1.25P-14L	PT4	5.5Nm.	AJ-M12*1.0	PT6	4.6
BT50-LHC18R-140	18	37	40	50	140	52.5	42.5	48	LHC-M8-1.25P-14L	PT4	5.5Nm.	AJ-M12*1.0	PT6	4.9
BT50-LHC20R-90	20	39	42	50	90	52.5	42.5	32	LHC-M10-1.5P-14L	PT5	5.5Nm.	AJ-M12*1.0	PT6	4.4
BT50-LHC20R-120	20	39	42	50	120	52.5	42.5	48	LHC-M10-1.5P-14L	PT5	5.5Nm.	AJ-M12*1.0	PT6	4.7
BT50-LHC20R-140	20	39	42	50	140	52.5	42.5	48	LHC-M10-1.5P-14L	PT5	5.5Nm.	AJ-M12*1.0	PT6	4.9
BT50-LHC25R-105	25	53	57	-	105	61	51	-	LHC-M10-1.5P-14L	PT5	5.5Nm.	AJ-M12*1.0	PT6	4.8

LHC 液壓刀柄系列

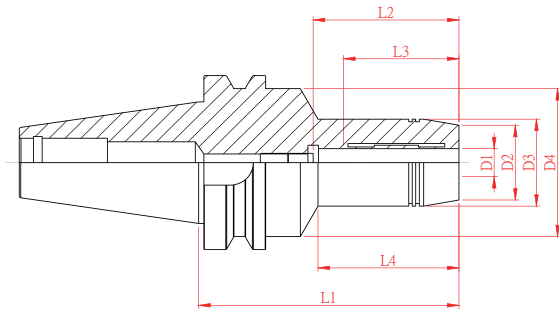
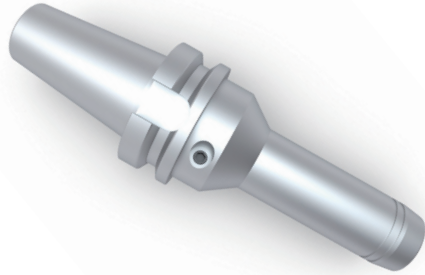
HYDRAULIC TOOL HOLDER SERIES



BT/LHC 液壓刀柄

HYDRAULIC TOOL HOLDER

R 系列
R Series



特點 Feature

- 標準動平衡 : G2.5 25000rpm

-Dynamic Balancing G2.5 at 25000rpm

規格 Spec.	D1	D2	D3	D4	L1	L2	L3	L4	鎖固螺絲 Clamping screw	扳手 Wrench	鎖固螺絲建 議扭力值 Torque	調整螺絲 Adjustment screw	微調螺絲 扳手 Wrench	重量 (KGS) Weight
BT50-LHC25R-150	25	53	57	-	150	61	51	-	LHC-M10-1.5P-14L	PT5	5.5Nm.	AJ-M12*1.0	PT6	5.6
BT50-LHC32R-115	32	58	62	-	115	65	55	-	LHC-M10-1.5P-14L	PT5	5.5Nm.	AJ-M12*1.0	PT6	5.1
BT50-LHC32R-150	32	58	62	-	150	65	55	-	LHC-M10-1.5P-14L	PT5	5.5Nm.	AJ-M12*1.0	PT6	5.8

LHC 斜度加長液壓刀柄系列

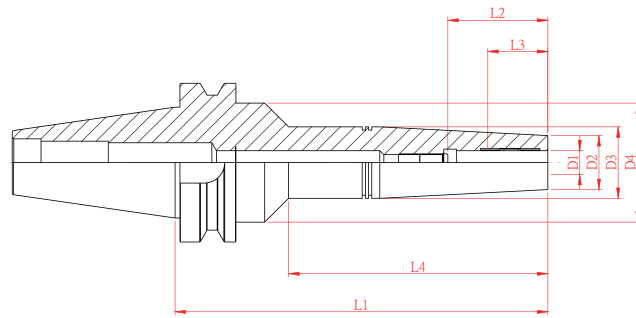
SLIM & TAPER HYDRAULIC TOOL HOLDER SERIES



BT/LHC 斜度加長液壓刀柄

SLIM & TAPER HYDRAULIC TOOL HOLDER

RS 系列
RS Series



特點 Feature

- 標準動平衡 : G2.5 25000rpm

-Dynamic Balancing G2.5 at 25000rpm

規格 Spec.	D1	D2	D3	D4	L1	L2	L3	L4	鎖固螺絲 Clamping screw	扳手 Wrench	鎖固螺絲建議 扭力值 Torque	調整螺絲 Adjustment screw	微調螺絲 扳手 Wrench	重量 (KGS) Weight
BT30-LHC6RS-110	6	16	24	44.5	110	37.5	27.5	66	LHC-M8-1.25P-14L	PT4	5.5Nm.	AJ-M5*0.5	PT2.5	0.9
BT30-LHC8RS-110	8	18	26	44.5	110	37.5	27.5	66	LHC-M8-1.25P-14L	PT4	5.5Nm.	AJ-M6*1.0	PT3	0.9
BT30-LHC10RS-110	10	20	28	44.5	110	42.5	32.5	67	LHC-M8-1.25P-14L	PT4	5.5Nm.	AJ-M8*1.0	PT4	1.1
BT30-LHC12RS-110	12	22	30	44.5	110	47.5	37.5	67	LHC-M8-1.25P-14L	PT4	5.5Nm.	AJ-M8*1.0	PT5	1.2
BT40-LHC6RS-150	6	16	24	50	150	37.5	27.5	103	LHC-M8-1.25P-14L	PT4	5.5Nm.	AJ-M5*0.5	PT2.5	1.6
BT40-LHC8RS-150	8	18	26	50	150	37.5	27.5	104	LHC-M8-1.25P-14L	PT4	5.5Nm.	AJ-M6*1.0	PT3	1.7
BT40-LHC10RS-150	10	20	28	50	150	42.5	32.5	104	LHC-M8-1.25P-14L	PT4	5.5Nm.	AJ-M8*1.0	PT4	1.7
BT40-LHC12RS-150	12	22	30	50	150	47.5	37.5	105	LHC-M8-1.25P-14L	PT4	5.5Nm.	AJ-M8*1.0	PT5	1.8
BT40-LHC14RS-150	14	24	32	50	150	47.5	37.5	105	LHC-M8-1.25P-14L	PT4	5.5Nm.	AJ-M8*1.0	PT5	1.8
BT40-LHC16RS-150	16	26	34	50	150	52.5	42.5	106	LHC-M8-1.25P-14L	PT4	5.5Nm.	AJ-M12*1.0	PT6	1.9
BT40-LHC18RS-150	18	28	36	50	150	52.5	42.5	107	LHC-M8-1.25P-14L	PT4	5.5Nm.	AJ-M12*1.0	PT6	1.9
BT40-LHC20RS-150	20	30	38	50	150	52.5	42.5	108	LHC-M8-1.25P-14L	PT4	5.5Nm.	AJ-M12*1.0	PT6	2.0
BT50-LHC6RS-190	6	16	24	50	190	37.5	27.5	120	LHC-M8-1.25P-14L	PT4	5.5Nm.	AJ-M5*0.5	PT2.5	4.3
BT50-LHC8RS-190	8	18	26	50	190	37.5	27.5	120	LHC-M8-1.25P-14L	PT4	5.5Nm.	AJ-M6*1.0	PT3	4.3
BT50-LHC10RS-190	10	20	28	50	190	42.5	32.5	120	LHC-M8-1.25P-14L	PT4	5.5Nm.	AJ-M8*1.0	PT4	4.4
BT50-LHC12RS-190	12	22	30	50	190	47.5	37.5	120	LHC-M8-1.25P-14L	PT4	5.5Nm.	AJ-M8*1.0	PT5	4.4
BT50-LHC14RS-190	14	24	32	50	190	47.5	37.5	121	LHC-M8-1.25P-14L	PT4	5.5Nm.	AJ-M8*1.0	PT5	4.5
BT50-LHC16RS-190	16	26	34	50	190	52.5	42.5	121	LHC-M8-1.25P-14L	PT4	5.5Nm.	AJ-M12*1.0	PT6	4.5
BT50-LHC18RS-190	18	28	36	50	190	52.5	42.5	122	LHC-M8-1.25P-14L	PT4	5.5Nm.	AJ-M12*1.0	PT6	4.6
BT50-LHC20RS-190	20	30	38	50	190	52.5	42.5	122	LHC-M8-1.25P-14L	PT4	5.5Nm.	AJ-M12*1.0	PT6	4.7

LHC 液壓刀柄系列

HYDRAULIC TOOL HOLDER SERIES



HSK/LHC 液壓刀柄

HYDRAULIC TOOL HOLDER

R 系列
R Series



Fig.1

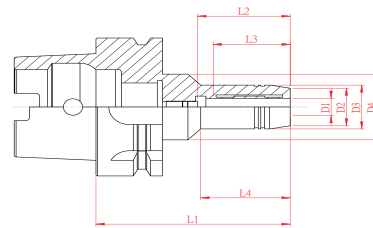
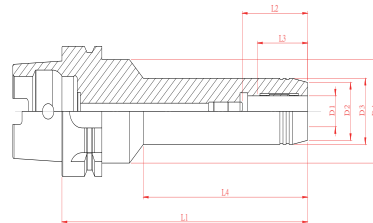


Fig.2



特點 Feature

- 標準動平衡 : G2.5 25000rpm

-Dynamic Balancing G2.5 at 25000rpm

規格 Spec.	D1	D2	D3	D4	L1	L2	L3	L4	鎖固螺絲 Clamping screw	扳手 Wrench	鎖固螺絲建議扭力值 Torque	調整螺絲 Adjustment screw	微調螺絲扳手 Wrench	重量 (KGS) Weight	Fig.
HSK63A-LHC6R-70	6	23	26	50	70	37.5	27.5	24	LHC-M8-1.25P-14L	PT4	5.5Nm.	AJ-M5*0.5	PT2.5	1.0	1
HSK63A-LHC6R-150	6	23	26	50	150	37.5	27.5	103	LHC-M8-1.25P-14L	PT4	5.5Nm.	AJ-M5*0.5	PT2.5	1.0	2
HSK63A-LHC6R-200	6	23	26	50	200	37.5	27.5	153	LHC-M8-1.25P-14L	PT4	5.5Nm.	AJ-M5*0.5	PT2.5	2.3	2
HSK63A-LHC8R-70	8	25	28	50	70	37.5	27.5	24	LHC-M8-1.25P-14L	PT4	5.5Nm.	AJ-M6*1.0	PT3	1.0	1
HSK63A-LHC8R-150	8	25	28	50	150	37.5	27.5	104	LHC-M8-1.25P-14L	PT4	5.5Nm.	AJ-M6*1.0	PT3	1.5	2
HSK63A-LHC8R-200	8	25	28	50	200	37.5	27.5	154	LHC-M8-1.25P-14L	PT4	5.5Nm.	AJ-M6*1.0	PT3	2.3	2
HSK63A-LHC10R-80	10	27	30	50	80	42.5	32.5	35	LHC-M8-1.25P-14L	PT4	5.5Nm.	AJ-M8*1.0	PT4	1.1	1
HSK63A-LHC10R-150	10	27	30	50	150	42.5	32.5	104	LHC-M8-1.25P-14L	PT4	5.5Nm.	AJ-M8*1.0	PT4	1.6	2
HSK63A-LHC10R-200	10	27	30	50	200	42.5	32.5	154	LHC-M8-1.25P-14L	PT4	5.5Nm.	AJ-M8*1.0	PT4	2.4	2
HSK63A-LHC12R-85	12	29	32	50	85	47.5	37.5	40	LHC-M8-1.25P-14L	PT4	5.5Nm.	AJ-M8*1.0	PT4	1.2	1
HSK63A-LHC12R-150	12	29	32	50	150	47.5	37.5	105	LHC-M8-1.25P-14L	PT4	5.5Nm.	AJ-M8*1.0	PT5	1.7	2
HSK63A-LHC12R-200	12	29	32	50	200	47.5	37.5	155	LHC-M8-1.25P-14L	PT4	5.5Nm.	AJ-M8*1.0	PT5	2.4	2
HSK63A-LHC14R-85	14	31	34	50	85	47.5	37.5	40	LHC-M8-1.25P-14L	PT4	5.5Nm.	AJ-M8*1.0	PT4	1.2	1
HSK63A-LHC14R-150	14	31	34	50	150	47.5	37.5	105	LHC-M8-1.25P-14L	PT4	5.5Nm.	AJ-M8*1.0	PT5	1.7	2
HSK63A-LHC14R-200	14	31	34	50	200	47.5	37.5	155	LHC-M8-1.25P-14L	PT4	5.5Nm.	AJ-M8*1.0	PT5	2.4	2
HSK63A-LHC16R-90	16	35	38	50	90	52.5	42.5	46	LHC-M8-1.25P-14L	PT4	5.5Nm.	AJ-M8*1.0	PT4	1.3	1
HSK63A-LHC16R-150	16	35	38	50	150	52.5	42.5	106	LHC-M8-1.25P-14L	PT4	5.5Nm.	AJ-M12*1.0	PT6	1.8	2
HSK63A-LHC16R-200	16	35	38	50	200	52.5	42.5	156	LHC-M8-1.25P-14L	PT4	5.5Nm.	AJ-M12*1.0	PT6	2.4	2
HSK63A-LHC18R-90	18	37	40	50	90	52.5	42.5	47	LHC-M8-1.25P-14L	PT4	5.5Nm.	AJ-M8*1.0	PT4	1.3	1
HSK63A-LHC18R-150	18	37	40	50	150	52.5	42.5	107	LHC-M8-1.25P-14L	PT4	5.5Nm.	AJ-M12*1.0	PT6	1.9	2
HSK63A-LHC18R-200	18	37	40	50	200	52.5	42.5	157	LHC-M8-1.25P-14L	PT4	5.5Nm.	AJ-M12*1.0	PT6	2.5	2

LHC 液壓刀柄系列

HYDRAULIC TOOL HOLDER SERIES



HSK/LHC 液壓刀柄

HYDRAULIC TOOL HOLDER

R 系列
R Series



Fig.1

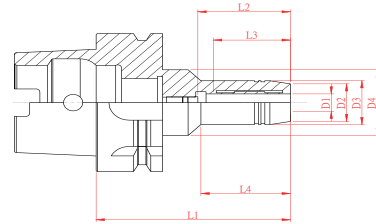
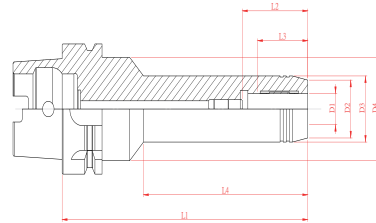


Fig.2



-Dynamic Balancing G2.5 at 25000rpm

特點 Feature

- 標準動平衡 : G2.5 25000rpm

規格 Spec.	D1	D2	D3	D4	L1	L2	L3	L4	鎖固螺絲 Clamping screw	扳手 Wrench	鎖固螺絲建 議扭力值 Torque	調整螺絲 Adjustment screw	微調螺絲 扳手 Wrench	重量 (KGS) Weight	Fig.
HSK63A-LHC20R-90	20	39	42	50	90	52.5	42.5	48	LHC-M8-1.25P-14L	PT4	5.5Nm.	AJ-M8*1.0	PT4	1.3	1
HSK63A-LHC20R-150	20	39	42	50	150	52.5	42.5	108	LHC-M10-1.5P-14L	PT5	5.5Nm.	AJ-M12*1.0	PT6	2.0	2
HSK63A-LHC20R-200	20	39	42	50	200	52.5	42.5	158	LHC-M10-1.5P-14L	PT5	5.5Nm.	AJ-M12*1.0	PT6	2.6	2
HSK63A-LHC25R-120	25	46	50	-	120	61	51	-	LHC-M10-1.5P-14L	PT5	5.5Nm.	AJ-M12*1.0	PT6	2.3	1
HSK63A-LHC32R-125	32	56	60	52.5	125	65	55	-	LHC-M10-1.5P-14L	PT5	5.5Nm.	AJ-M12*1.0	PT6	2.8	1
HSK100A-LHC6R-75	6	23	26	50	75	37.5	27.5	26	LHC-M8-1.25P-14L	PT4	5.5Nm.	AJ-M5*0.5	PT2.5	2.6	1
HSK100A-LHC6R-160	6	23	26	50	160	37.5	27.5	104	LHC-M8-1.25P-14L	PT4	5.5Nm.	AJ-M5*0.5	PT2.5	3.0	2
HSK100A-LHC6R-200	6	23	26	50	200	37.5	27.5	144	LHC-M8-1.25P-14L	PT4	5.5Nm.	AJ-M5*0.5	PT2.5	3.2	2
HSK100A-LHC8R-75	8	25	28	50	75	37.5	27.5	26	LHC-M8-1.25P-14L	PT4	5.5Nm.	AJ-M6*1.0	PT3	2.7	1
HSK100A-LHC8R-160	8	25	28	50	160	37.5	27.5	104	LHC-M8-1.25P-14L	PT4	5.5Nm.	AJ-M6*1.0	PT3	3.1	2
HSK100A-LHC8R-200	8	25	28	50	200	37.5	27.5	144	LHC-M8-1.25P-14L	PT4	5.5Nm.	AJ-M6*1.0	PT3	3.3	2
HSK100A-LHC10R-90	10	27	30	50	90	42.5	32.5	42	LHC-M8-1.25P-14L	PT4	5.5Nm.	AJ-M8*1.0	PT4	2.8	1
HSK100A-LHC10R-160	10	27	30	50	160	42.5	32.5	105	LHC-M8-1.25P-14L	PT4	5.5Nm.	AJ-M8*1.0	PT4	3.1	2
HSK100A-LHC10R-200	10	27	30	50	200	42.5	32.5	145	LHC-M8-1.25P-14L	PT4	5.5Nm.	AJ-M8*1.0	PT4	3.3	2
HSK100A-LHC12R-95	12	29	32	50	95	47.5	37.5	47	LHC-M8-1.25P-14L	PT4	5.5Nm.	AJ-M8*1.0	PT5	2.8	1
HSK100A-LHC12R-160	12	29	32	50	160	47.5	37.5	105	LHC-M8-1.25P-14L	PT4	5.5Nm.	AJ-M8*1.0	PT5	3.2	2
HSK100A-LHC12R-200	12	29	32	50	200	47.5	37.5	145	LHC-M8-1.25P-14L	PT4	5.5Nm.	AJ-M8*1.0	PT5	3.4	2
HSK100A-LHC14R-95	14	31	34	50	95	47.5	37.5	47	LHC-M8-1.25P-14L	PT4	5.5Nm.	AJ-M8*1.0	PT5	2.8	1
HSK100A-LHC14R-160	14	31	34	50	160	47.5	37.5	107	LHC-M8-1.25P-14L	PT4	5.5Nm.	AJ-M8*1.0	PT5	3.2	2
HSK100A-LHC14R-200	14	31	34	50	200	47.5	37.5	147	LHC-M8-1.25P-14L	PT4	5.5Nm.	AJ-M8*1.0	PT5	3.5	2
HSK100A-LHC16R-100	16	35	38	50	100	52.5	42.5	53	LHC-M8-1.25P-14L	PT4	5.5Nm.	AJ-M12*1.0	PT6	2.9	1
HSK100A-LHC16R-160	16	35	38	50	160	52.5	42.5	107	LHC-M8-1.25P-14L	PT4	5.5Nm.	AJ-M12*1.0	PT6	3.4	2
HSK100A-LHC16R-200	16	35	38	50	200	52.5	42.5	147	LHC-M8-1.25P-14L	PT4	5.5Nm.	AJ-M12*1.0	PT6	3.8	2

LHC 液壓刀柄系列

HYDRAULIC TOOL HOLDER SERIES



HSK/LHC 液壓刀柄

HYDRAULIC TOOL HOLDER

R 系列
R Series



Fig.1

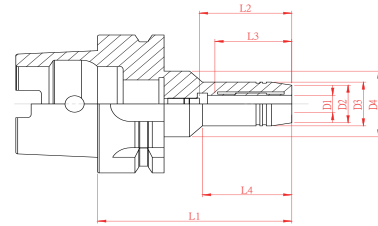
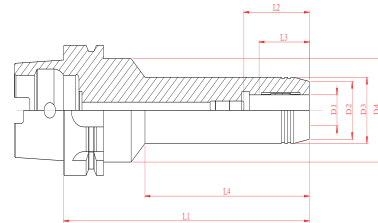


Fig.2



特點 Feature

- 標準動平衡 : G2.5 25000rpm

-Dynamic Balancing G2.5 at 25000rpm

規格 Spec.	D1	D2	D3	D4	L1	L2	L3	L4	鎖固螺絲 Clamping screw	扳手 Wrench	鎖固螺絲建議 扭力值 Torque	調整螺絲 Adjustment screw	微調螺絲 扳手 Wrench	重量 (KGS) Weight	Fig.
HSK100A-LHC18R-100	18	37	40	50	100	52.5	42.5	53	LHC-M8-1.25P-14L	PT4	5.5Nm.	AJ-M12*1.0	PT6	3.0	1
HSK100A-LHC18R-160	18	37	40	50	160	52.5	42.5	108	LHC-M8-1.25P-14L	PT4	5.5Nm.	AJ-M12*1.0	PT6	3.5	2
HSK100A-LHC18R-200	18	37	40	50	200	52.5	42.5	148	LHC-M8-1.25P-14L	PT4	5.5Nm.	AJ-M12*1.0	PT6	3.9	2
HSK100A-LHC20R-105	20	39	42	50	105	52.5	42.5	59	LHC-M10-1.5P-14L	PT5	5.5Nm.	AJ-M12*1.0	PT6	3.0	1
HSK100A-LHC20R-160	20	39	42	50	160	52.5	42.5	108	LHC-M10-1.5P-14L	PT5	5.5Nm.	AJ-M12*1.0	PT6	3.6	2
HSK100A-LHC20R-200	20	39	42	50	200	52.5	42.5	148	LHC-M10-1.5P-14L	PT5	5.5Nm.	AJ-M12*1.0	PT6	4.0	2
HSK100A-LHC25R-110	25	53	57	63	110	61	51	62	LHC-M10-1.5P-14L	PT5	5.5Nm.	AJ-M12*1.0	PT6	3.7	1
HSK100A-LHC25R-160	25	53	57	63	160	61	51	110	LHC-M10-1.5P-14L	PT5	5.5Nm.	AJ-M12*1.0	PT6	4.7	2
HSK100A-LHC25R-200	25	53	57	63	200	61	51	150	LHC-M10-1.5P-14L	PT5	5.5Nm.	AJ-M12*1.0	PT6	5.4	2
HSK100A-LHC32R-110	32	58	63	75	110	65	55	62	LHC-M10-1.5P-14L	PT5	5.5Nm.	AJ-M12*1.0	PT6	3.9	1
HSK100A-LHC32R-160	32	58	63	75	160	65	55	110	LHC-M10-1.5P-14L	PT5	5.5Nm.	AJ-M12*1.0	PT6	5.0	2
HSK100A-LHC32R-200	32	58	63	75	200	65	55	150	LHC-M10-1.5P-14L	PT5	5.5Nm.	AJ-M12*1.0	PT6	6.1	2

LHC 斜度加長液壓刀柄系列

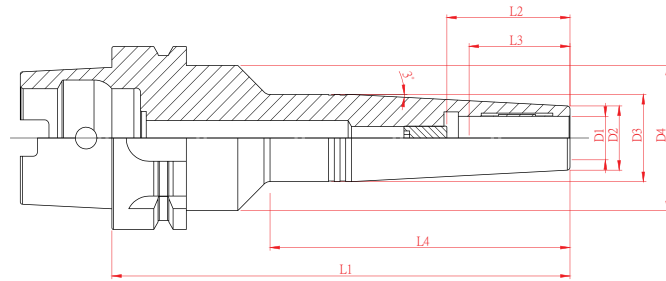
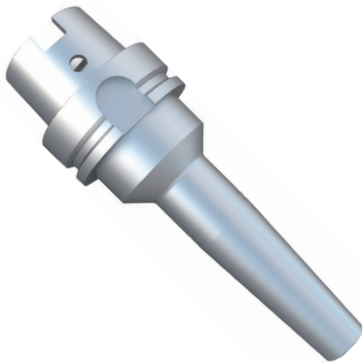
SLIM & TAPER HYDRAULIC TOOL HOLDER SERIES



HSK/LHC 斜度加長液壓刀柄

SLIM & TAPER HYDRAULIC TOOL HOLDER

RS 系列
RS Series



特點 Feature

- 標準動平衡: G2.5 25000rpm

-Dynamic Balancing G2.5 at 25000rpm

規格 Spec.	D1	D2	D3	D4	L1	L2	L3	L4	鎖固螺絲 Clamping screw	扳手 Wrench	鎖固螺絲建 議扭力值 Torque	調整螺絲 Adjustment screw	微調螺絲 扳手 Wrench	重量 (KGS) Weight
HSK63A-LHC6RS-150	6	16	24	50	150	37.5	27.5	103	LHC-M8-1.25P-14L	PT4	5.5Nm.	AJ-M5*0.5	PT2.5	1.3
HSK63A-LHC8RS-150	8	18	26	50	150	37.5	27.5	104	LHC-M8-1.25P-14L	PT4	5.5Nm.	AJ-M6*1.0	PT3	1.3
HSK63A-LHC10RS-150	10	20	28	50	150	42.5	32.5	104	LHC-M8-1.25P-14L	PT4	5.5Nm.	AJ-M8*1.0	PT4	1.4
HSK63A-LHC12RS-150	12	22	30	50	150	47.5	37.5	105	LHC-M8-1.25P-14L	PT4	5.5Nm.	AJ-M8*1.0	PT5	1.5
HSK63A-LHC14RS-150	14	24	32	50	150	47.5	37.5	105	LHC-M8-1.25P-14L	PT4	5.5Nm.	AJ-M8*1.0	PT5	1.5
HSK63A-LHC16RS-150	16	26	34	50	150	52.5	42.5	106	LHC-M8-1.25P-14L	PT4	5.5Nm.	AJ-M12*1.0	PT6	1.6
HSK63A-LHC18RS-150	18	28	36	50	150	52.5	42.5	107	LHC-M8-1.25P-14L	PT4	5.5Nm.	AJ-M12*1.0	PT6	1.6
HSK63A-LHC20RS-150	20	30	38	50	150	52.5	42.5	108	LHC-M8-1.25P-14L	PT4	5.5Nm.	AJ-M12*1.0	PT6	1.7
HSK100A-LHC6RS-180	6	16	24	50	180	37.5	27.5	120	LHC-M8-1.25P-14L	PT4	5.5Nm.	AJ-M5*0.5	PT2.5	3.0
HSK100A-LHC8RS-180	8	18	26	50	180	37.5	27.5	120	LHC-M8-1.25P-14L	PT4	5.5Nm.	AJ-M6*1.0	PT3	3.1
HSK100A-LHC10RS-180	10	20	28	50	180	42.5	32.5	120	LHC-M8-1.25P-14L	PT4	5.5Nm.	AJ-M8*1.0	PT4	3.1
HSK100A-LHC12RS-180	12	22	30	50	180	47.5	37.5	120	LHC-M8-1.25P-14L	PT4	5.5Nm.	AJ-M8*1.0	PT5	3.2
HSK100A-LHC14RS-180	14	24	32	50	180	47.5	37.5	121	LHC-M8-1.25P-14L	PT4	5.5Nm.	AJ-M8*1.0	PT5	3.2
HSK100A-LHC16RS-180	16	26	34	50	180	52.5	42.5	121	LHC-M8-1.25P-14L	PT4	5.5Nm.	AJ-M12*1.0	PT6	3.3
HSK100A-LHC18RS-180	18	28	36	50	180	52.5	42.5	122	LHC-M8-1.25P-14L	PT4	5.5Nm.	AJ-M12*1.0	PT6	3.4
HSK100A-LHC20RS-180	20	30	38	50	180	52.5	42.5	122	LHC-M8-1.25P-14L	PT4	5.5Nm.	AJ-M12*1.0	PT6	3.4

HYC 液壓套筒

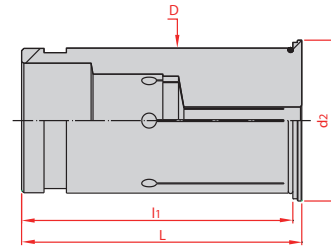
HYC HYDRAULIC COLLET



HYC 液壓套筒

HYC HYDRAULIC COLLET

精度 Accuracy : 5 μ m



規格 Spec.	L	l ₁	D	d ₂	重量 (KGS) Weight
HYC12	47	45	12	16.5	-
HYC16	52.5	50.5	16	20	-
HYC20	52.5	50.5	20	24	-
HYC32	62.5	60.5	32	35.5	-

HYC12

規格 Spec.	夾持範圍 Range
HYC12-03	3
HYC12-04	4
HYC12-05	5
HYC12-06	6
HYC12-08	8

HYC16

規格 Spec.	夾持範圍 Range
HYC16-03	3
HYC16-04	4
HYC16-06	6
HYC16-08	8
HYC16-10	10
HYC16-12	12

HYC20

規格 Spec.	夾持範圍 Range
HYC20-03	3
HYC20-04	4
HYC20-05	5
HYC20-06	6
HYC20-07	7
HYC20-08	8
HYC20-09	9
HYC20-10	10
HYC20-11	11
HYC20-12	12
HYC20-13	13
HYC20-14	14
HYC20-15	15
HYC20-16	16

HYC32

規格 Spec.	夾持範圍 Range
HYC32-06	6
HYC32-08	8
HYC32-10	10
HYC32-12	12
HYC32-14	14
HYC32-16	16
HYC32-18	18
HYC32-20	20
HYC32-25	25

HYC 液壓出水套筒

HYC HYDRAULIC COOLANT COLLET



HYC 液壓出水套筒

HYC HYDRAULIC COOLANT COLLET

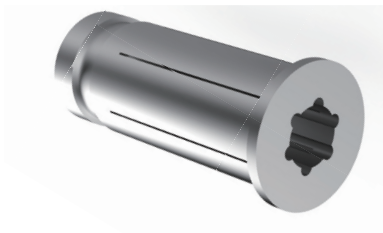


Fig.1

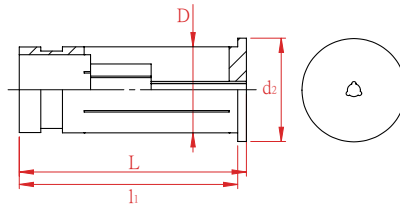
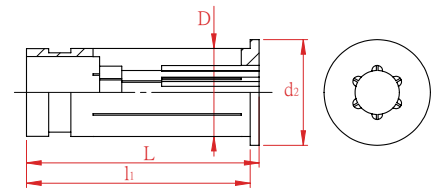


Fig.2



HYC20-FID


規格 Spec.	夾持範圍 Range	Fig.
HYC20-03-FID	3	1
HYC20-04-FID	4	1
HYC20-06-FID	6	2
HYC20-08-FID	8	2
HYC20-10-FID	10	2
HYC20-12-FID	12	2


**CHAIN
HEADWAY**
正河源股份有限公司

 電話 TEL /
+886-4-26265252

 傳真 FAX /
+886-4-26267941

 地址 Address /
台灣台中市清水區五權路232號
No. 232, Wuquan Rd., Qingshui Dist., Taichung City 436, Taiwan

 網址 Website /
www.chain-headway.com



公司官網(中文)



Website(EN)



LINE



WeChat



Facebook



YouTube