



SINCE 1992

COMPANY PROFILE

No. 240611007



CUTTING EDGE SOLUTIONS

Keep Up With The Times & Proactive Advanced Manufacturing

Proactive Advanced Manufacturing

Chain Headway was founded in 1992 to develop and produce cutting tools and accessories for CNC machining centers. Our company has developed over the years to provide a stable production environment with advanced R&D and manufacturing capabilities.

This is designed to provide cutting edge products and more efficient materials processing solutions for various types of industries. Our investment in R&D helps us to deliver the latest materials processing solutions for intelligent manufacturing to our customers.

- We are partnered with the University of Science & Technology developing a group of future Cutting professionals.
- We have a new 8250 square meter production facility which combines our office buildings with automated production facilities.
- Our production and inspection equipment is sourced from Japan and Europe to maintain the best possible quality and efficiency.

Industry processing challenges are constantly evolving with the development of high temperature alloys and composite materials. Our management team is proactively addressing these evolving materials processing requirements to rapidly develop & provide customers with the latest material processing solutions and the best possible customer service.





正河源



正河源機械配件有限公司
CHAIN HEADWAY MACHINE TOOLS CO., LTD.

CHAIN HEADWAY

CHAIN HEADWAY



Our History

• Chain Headway Founded

Conventional Tool Holders & Accessories



• Development of China Market

CNC Milling Holders & Accessories



Year

1992

1995

2000

2005

• Expansion of Taiwan Market

CNC Turning Tools & Accessories



• Expansion of Branches and Tooling Solutions

CNC Cutting Tools & Tooling Solutions



- **Development of Southeast Asia Market**

Cutting Tool Manufacturing & Carbide Insert Grinding



- **New Modern Design of Chain Headway HQ Building**

Continue Providing Cutting-Edge Solutions

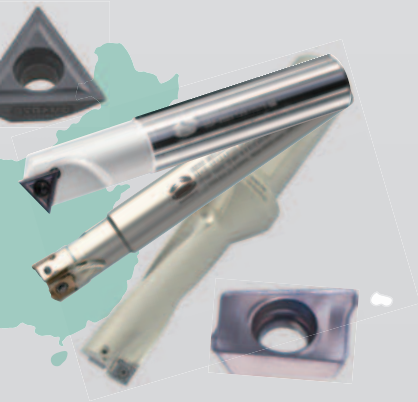


2010

2015

2020

Future



- **Expansion of China Factories and Offices**

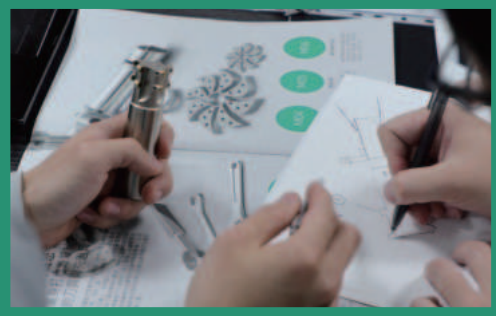
Manufacturing Tools & Solutions

- **Expansion of Southeast Asia Market**

Grinding of PCD & PCBN Inserts



R&D Capability



- Discovering the needs of manufacturing industry.
- Upgrading the design and improving function of the tool.
- Delivering innovative cutting tools and equipment.



Production Capacity

Production Equipment

Japanese-Made

50%

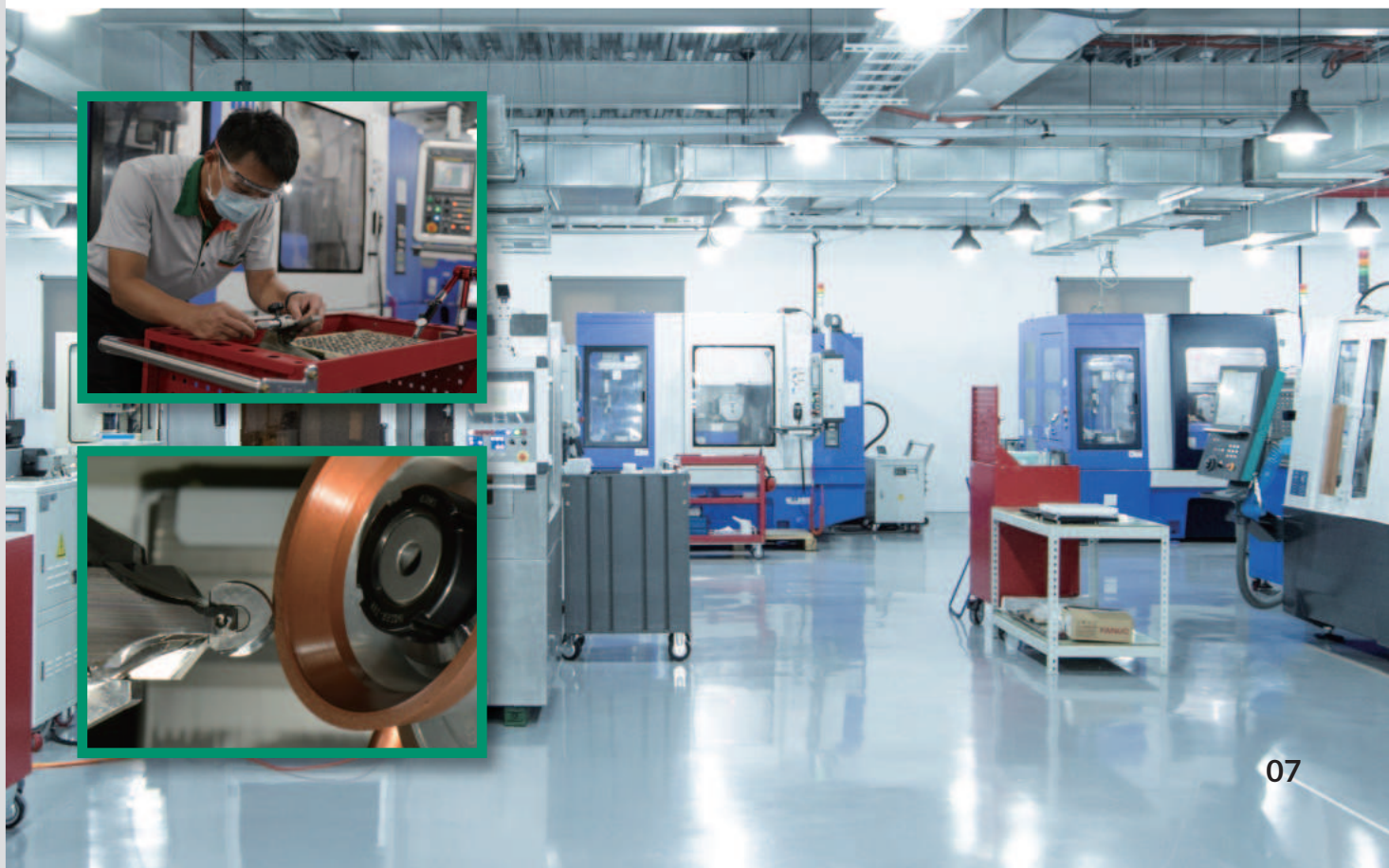
European-Made

21%

Others

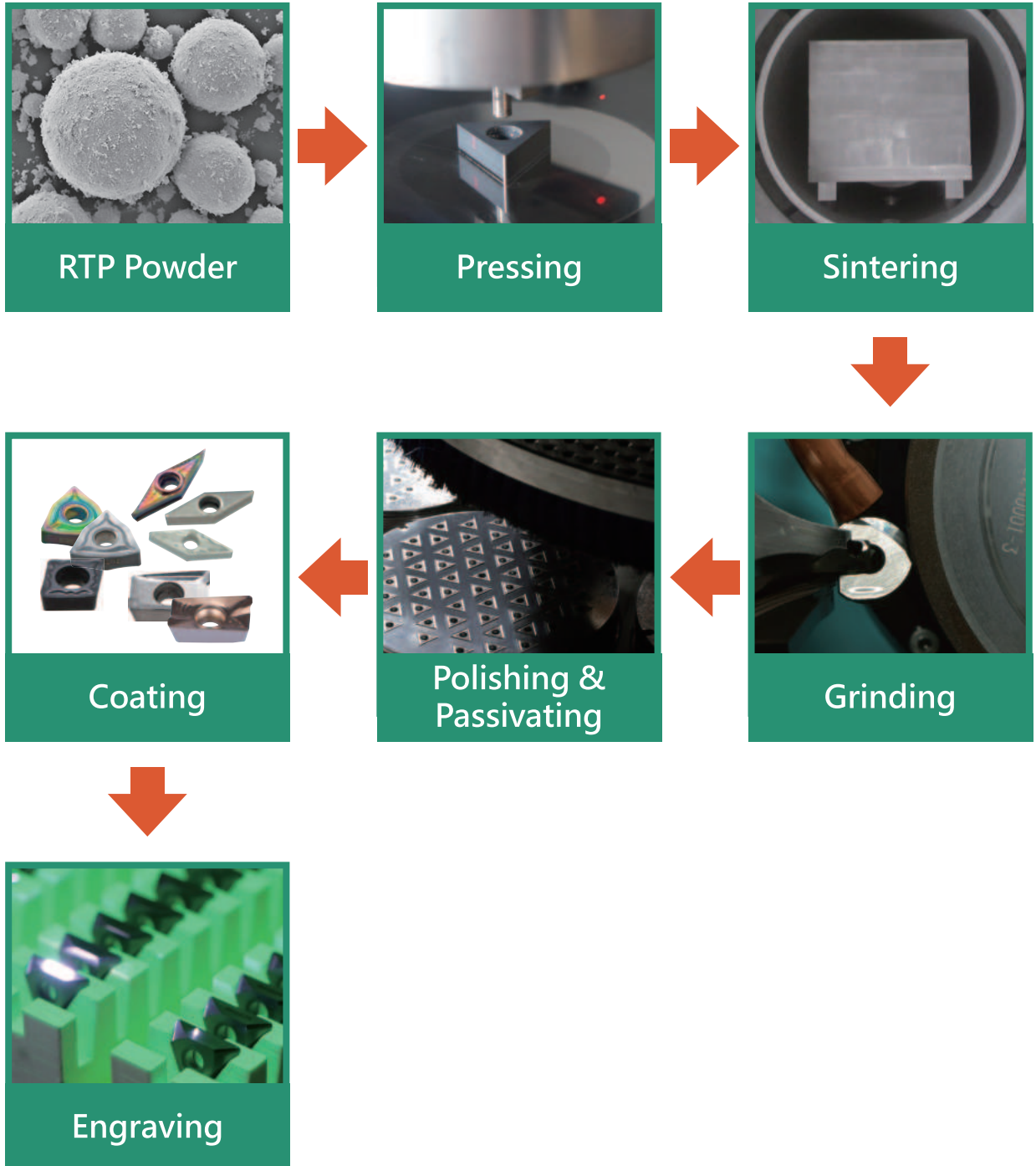
29%

Pressing, Grinding, Sintering, Polishing & Passivating,
and CNC Machining Centers



Production Process

Manufacturing Process



Insisting on Rigorous of Every Procedures ISO 9001: 2015



- Dimension Measurement & Contour Measurement (Japan)
- Tool Presetter (Germany)
- Tool Microscope (Japan)
- Rockwell Hardness Testing Machine (Taiwan)
- X-Ray Fluorescence Spectrometer (Japan)
- 2D Measurement System (Japan)
- 3D Optical Measurement Instrument (Austria)
- Adventurer Analytical Balance (USA)

PRODUCTS INTRO

01 TOOL HOLDERS SERIES

02 CUTTING TOOLS SERIES

03 TOOLS & EQUIPMENT

04 CUSTOMIZATION &
CUTTING SOLUTIONS

05 VALUE-ADDED SERVICES

01

TOOL HOLDERS SERIES



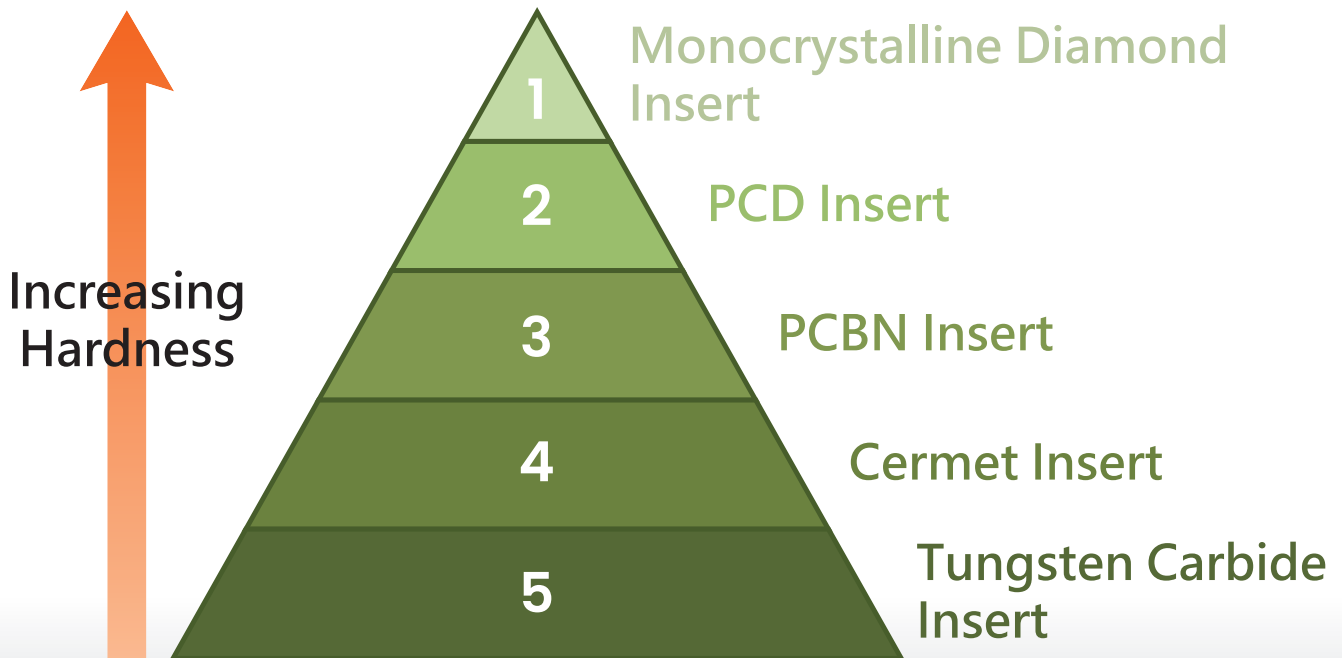
Tool Holder Spindle Series

- ISO15, ISO20, ISO25, ISO30
- BT15, BT20, BT30, BT40, BT50, BT60
- SBT30, SBT40, SBT50 (BBT)
- HSK25E, HSK32E, HSK40E, HSK50E
- HSK32A, HSK40A, HSK50A, HSK63A, HSK40A, HSK63A, HSK80A, HSK100A, HSK125A, HSK160A
- HSK63T, HSK63F
- PSC32, PSC40, PSC50, PSC63, PSC80, PSC80X

02

CUTTING TOOLS SERIES





1 Monocrystalline Diamond Insert

For high precision machining & mirror polishing surface.

2 PCD Insert

For non-ferrous metal & composite material machining.

3 PCBN Insert

For high-hardness HRC50°~60° , difficult-to-cut materials & heat-resistant materials.

4 Cermet Insert

For the requirement of wear resistance, toughness, and thermal Stability.

5 Tungsten Carbide Insert

For general metal cutting, primarily used for high-speed cutting, High wear resistance, and high strength applications.

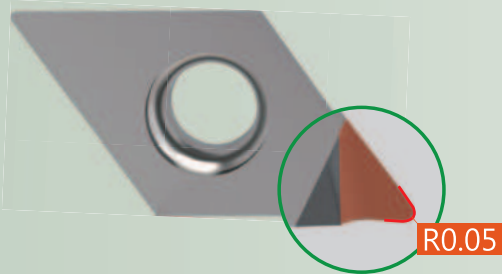


Cutting Inserts Series



MD100 Monocrystalline Insert Seat

MD Insert -
Monocrystalline Diamond Insert

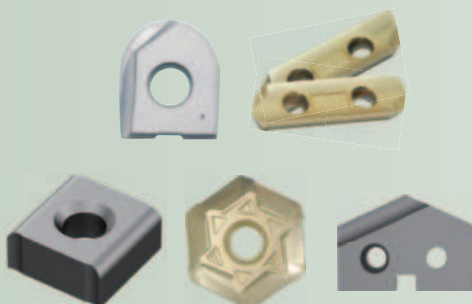


PCD&PCBN Precision Insert



Cermet Insert

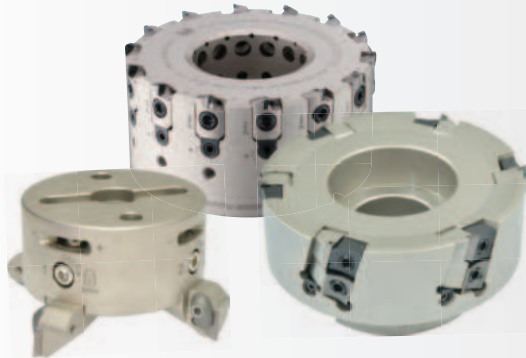
Cermet Insert



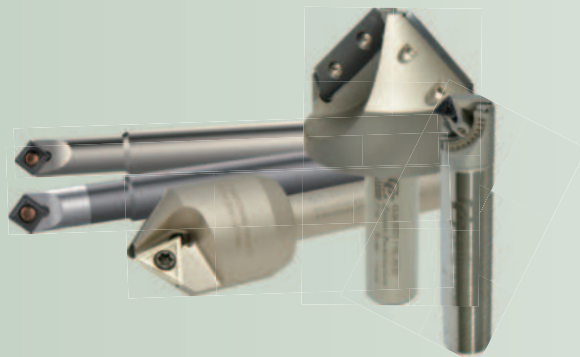
Tungsten Carbide Insert



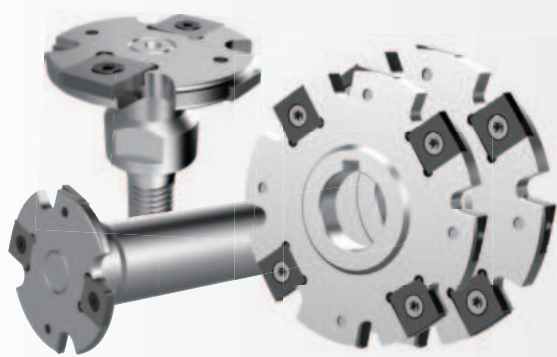
Milling Series



Micro-Adjustment
Finish Face Mill Series



Chamfering Cutter Series



Side Milling Cutter Series



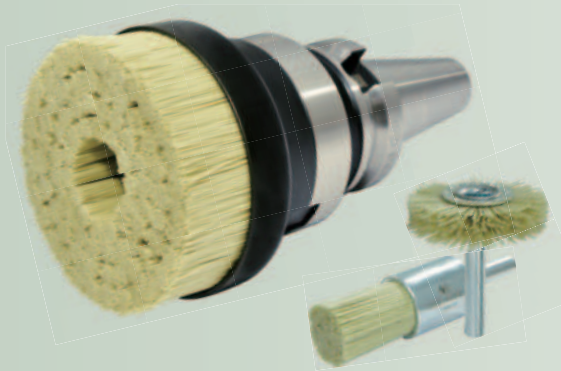
Deep And Large Area
Cutting Series



Milling Series



Negative Rake Angle Insert Series



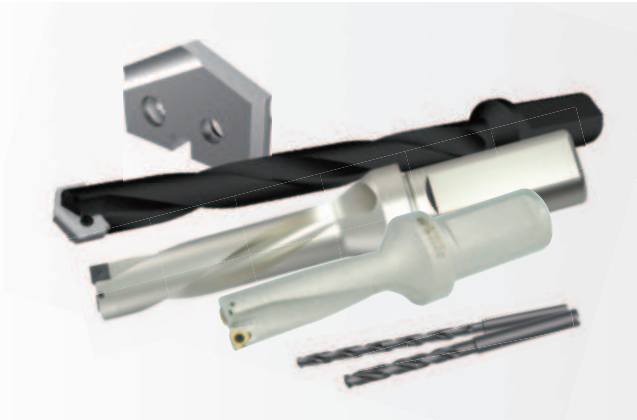
Diamond Brushes for Deburring, Removing Marks, and Polishing



Carbide End Mills



Drill Series



Drill Series



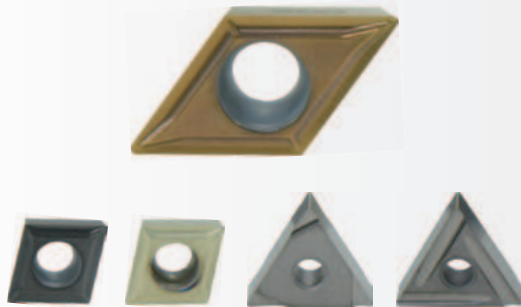
Boring Series



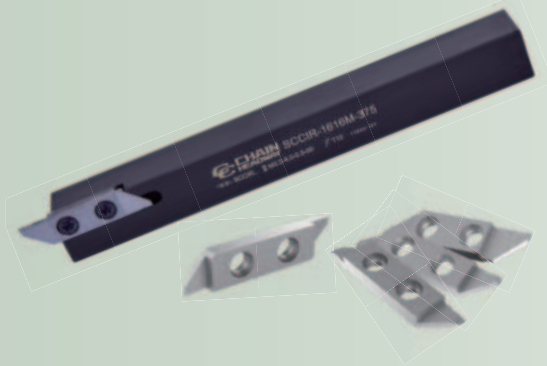
Boring Series



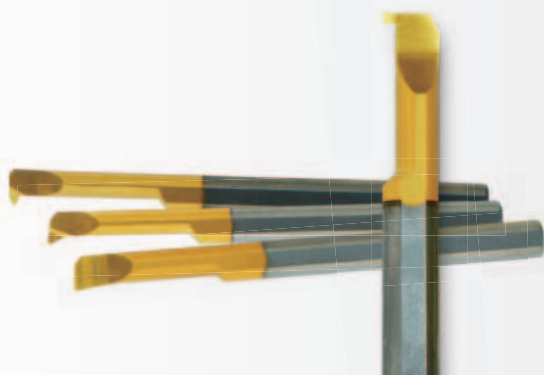
Turning Tools For Swiss-Type Lathe



Ground Turning Inserts



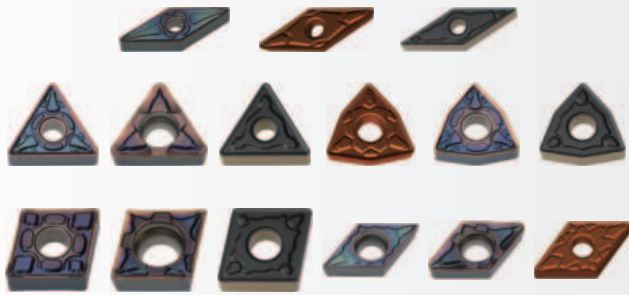
SCCI Swiss-Type Lathe Series



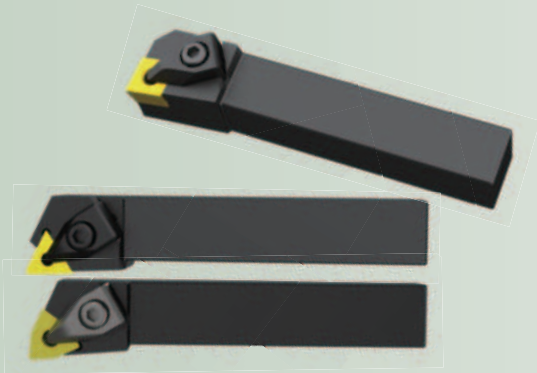
MT Carbide Micro Boring Bars
Series



Turning Series



Turning Inserts



D-Type External Turning Tools



Grooving / Cut-Off Series



Parting-Off Tools / Grooving Tools



Damped Turning Tools Series



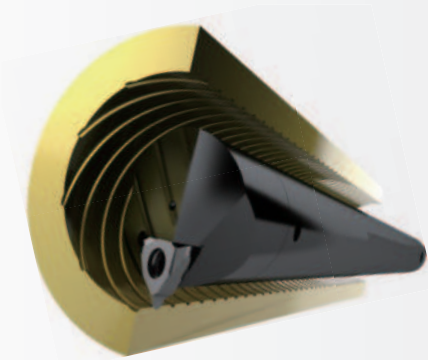
Carbide Shanks



BM Modular Series



Thread Machining Series



Thread Machining Series



Customized Threading Tools and Inserts

03

TOOLS & EQUIPMENT





Equipment Series



LM-HM-12400
Shrink Fit Hot Air Heater
(For Stainless Steel)

Accuracy 0.005mm



LM-CM-PHC3160
Micron Grade Tool Presetter

Measurement Max. Diameter \varnothing 400mm

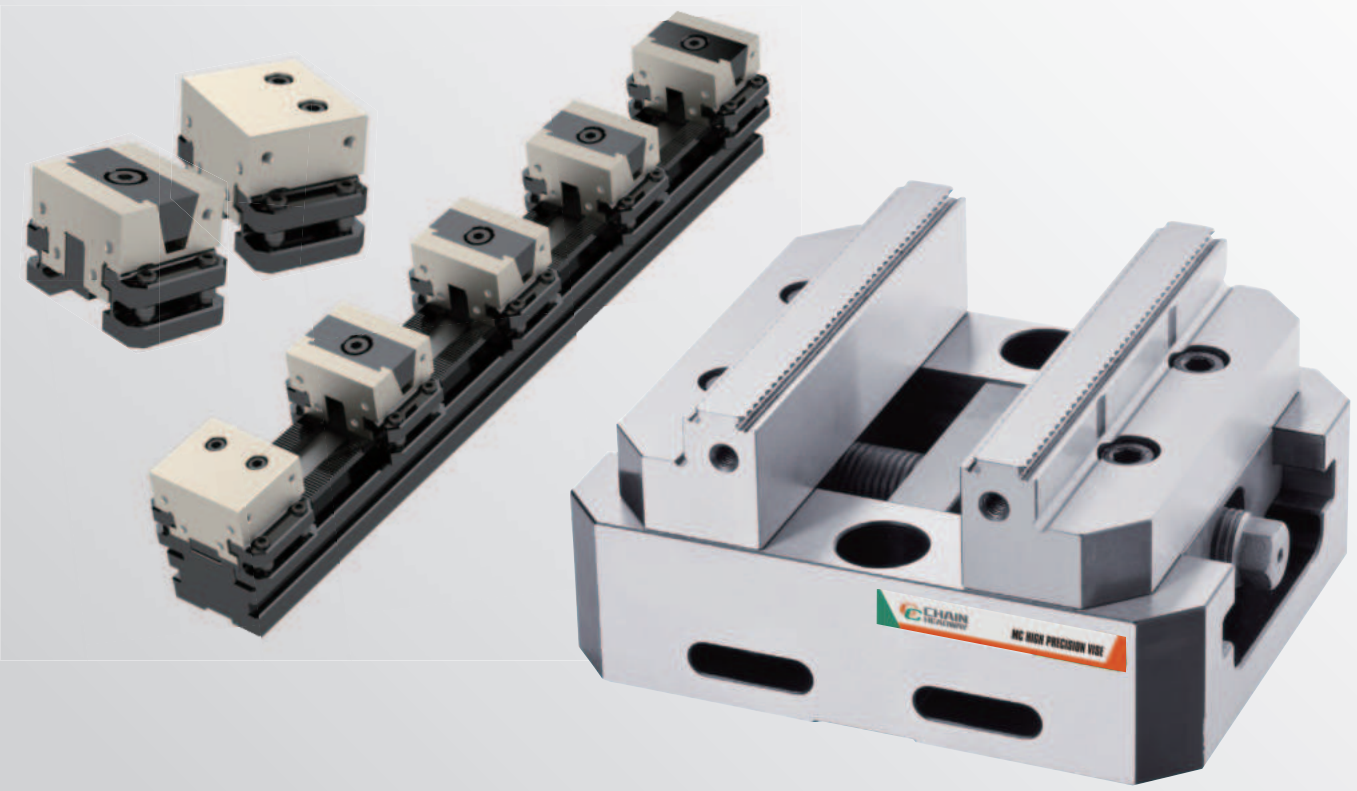
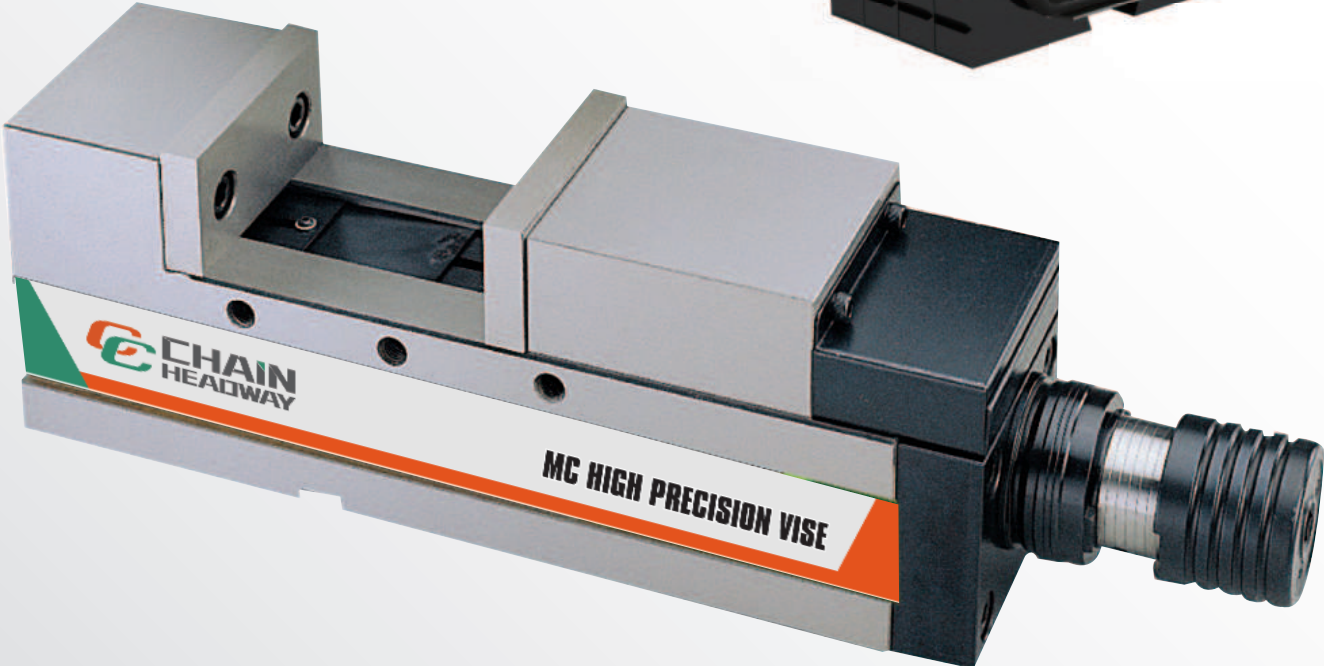
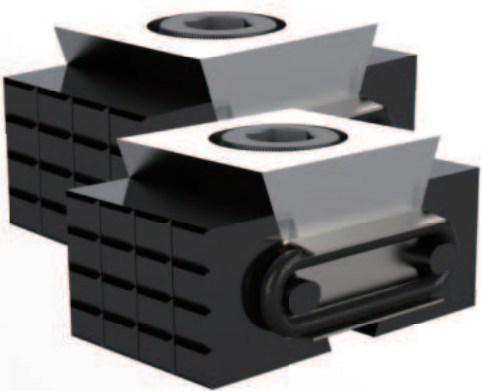
Accuracy 0.005mm



LM-CM-PHC3400X
Precision Grade Tool Presetter



Clamping Systems





Tools and Accessories

TW
Torque Screwdriver



BIT Extension



Bits Torx $\frac{1}{4}$ "



Screw



LM-TW
Torque Spanner



Nut Spanner



Pull Stud Spanner
Adapter



Bearing Wrench



Hook Spanner



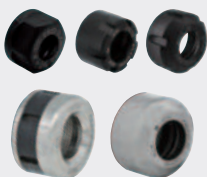
ER Spanner



Pull Stud Spanner



Nuts



Pull Studs



Spanner

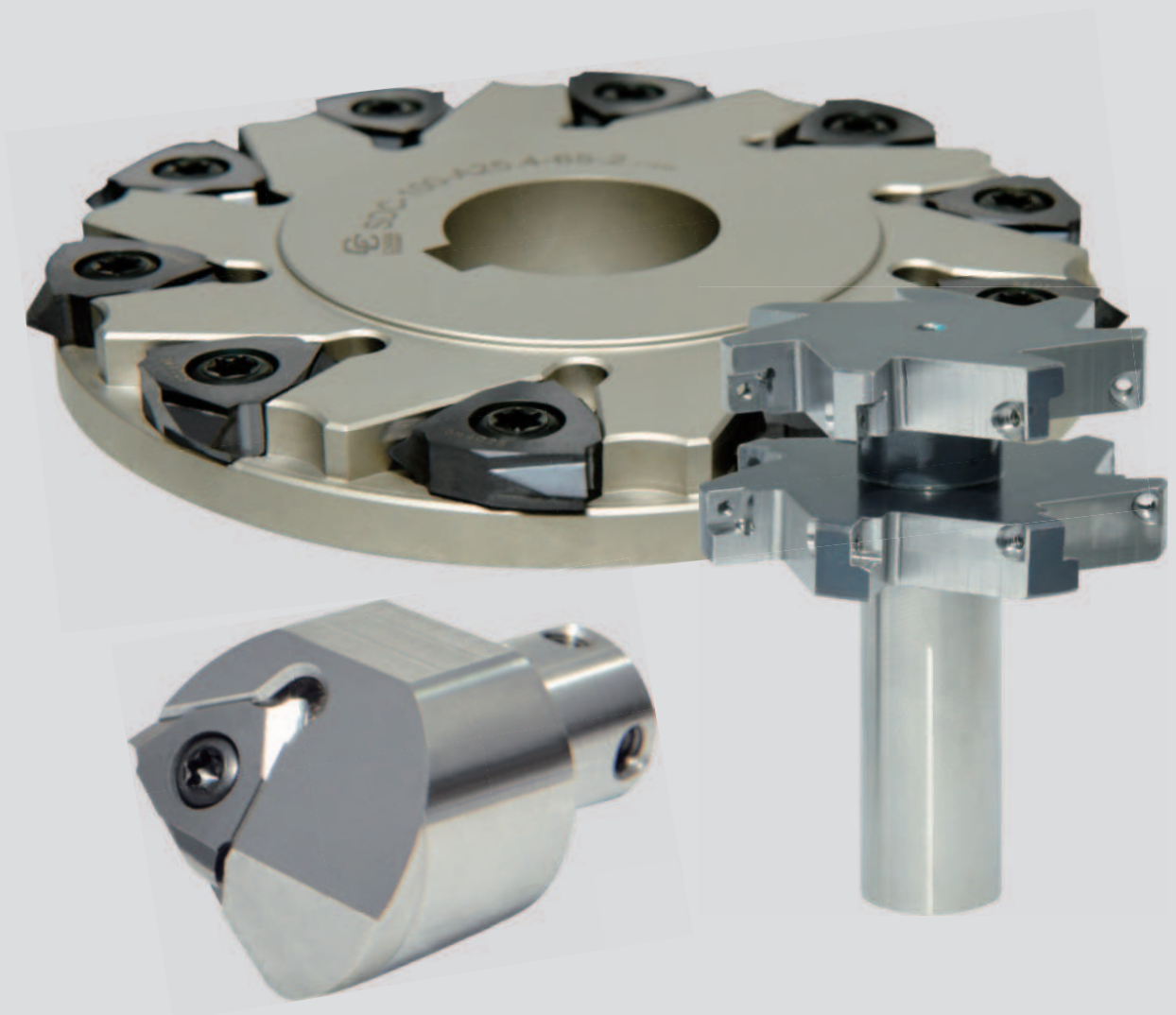


04

CUSTOMIZATION & CUTTING SOLUTIONS

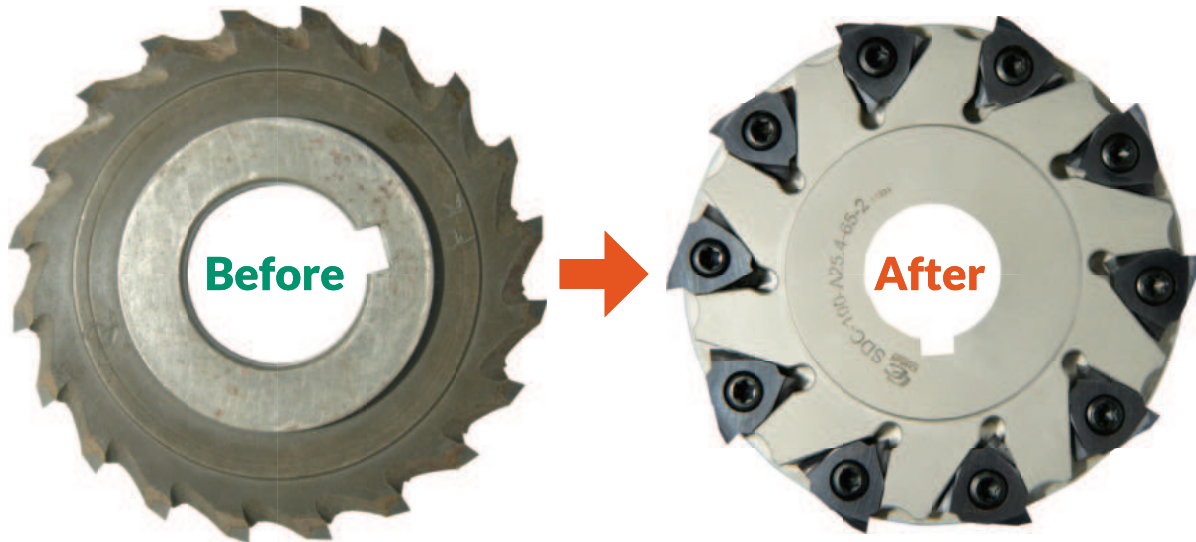
TIME + EFFICIENCY + CONSISTENCY
= BENEFIT & PROFIT

Customized Solutions For Your Unique Needs





Customized Cutting Tools

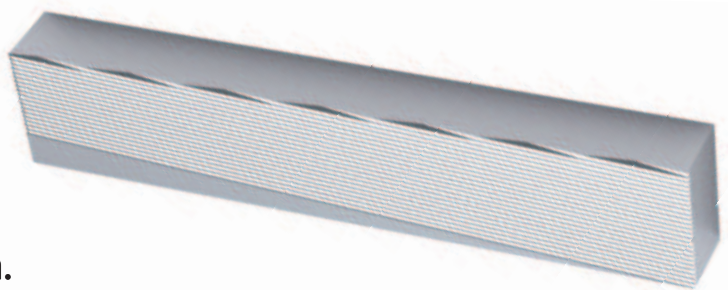


Indexable Threading Tool

Saving regrinding time.

Insert angle customizable, e.g., 53°, 56°, 58°, 60°, 65°, 70°, etc.

Tool diameter : Ø60-Ø100mm
 Insert tolerance : Within 0.02mm.



Simplifies on-site management, saving calibration time, and **improves efficiency by 100%**.

Description	Traditional Welded Insert	Indexable Insert
Lifetime	5-6pcs	More than 10pcs/Tip
Tool Change and Calibration Time	More than 20-30 minutes	3-5 minutes
Personnel Training	High training requirements for production control personnel	Easier training for insert replacement

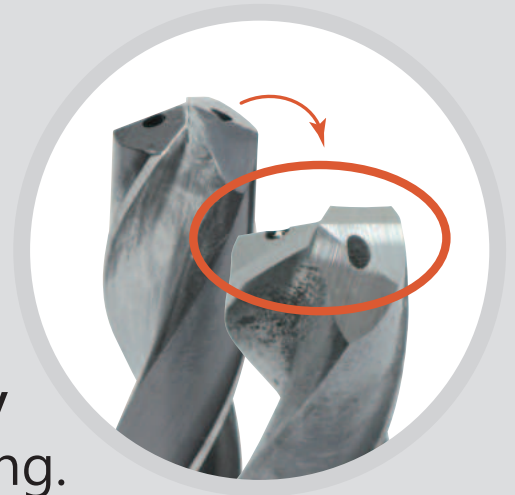
05

VALUE-ADDED SERVICES

1 Regrinding

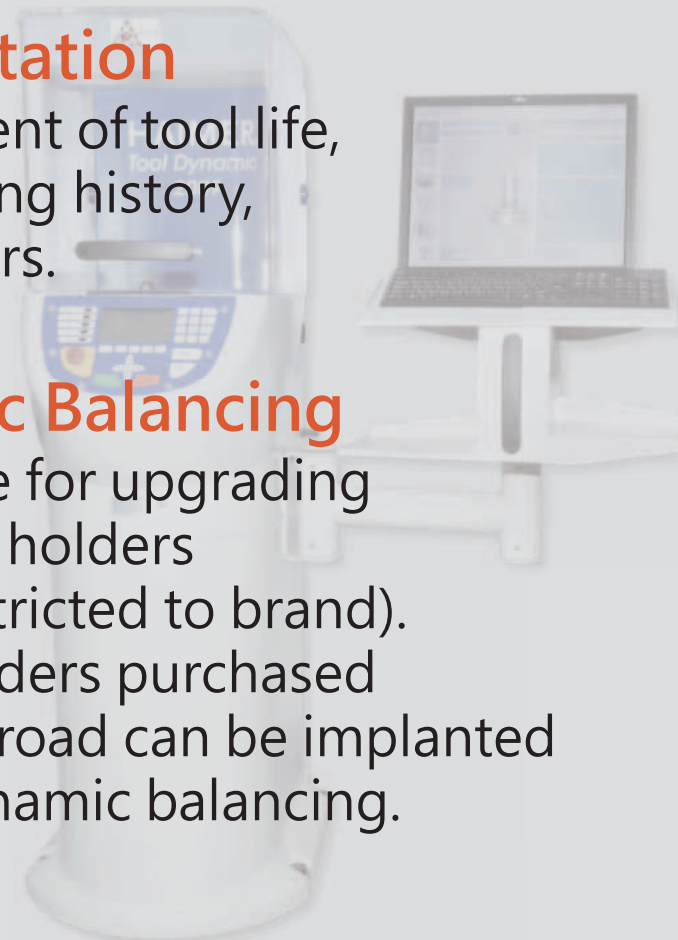
Regrinding, waste-free, environmentally friendly

- Cermet inserts regrinding.
- PCD & PCBN inserts regrinding.
- Tungsten carbide drills regrinding.



2 RFID Chip Implantation

Intelligent management of tool life, tool identity, processing history, and cutting parameters.



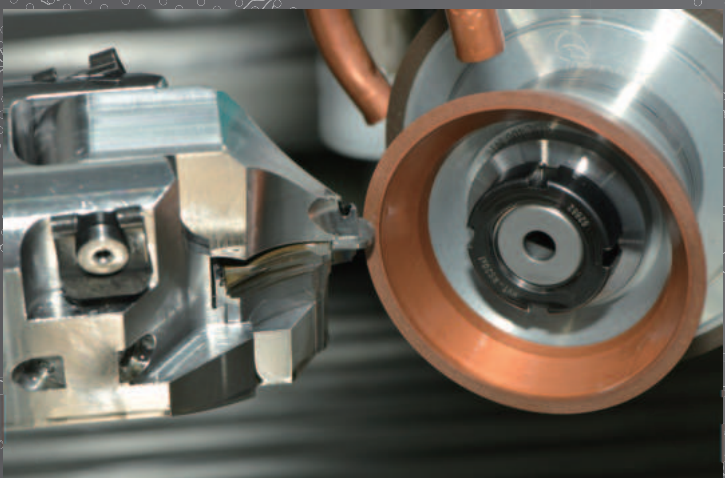
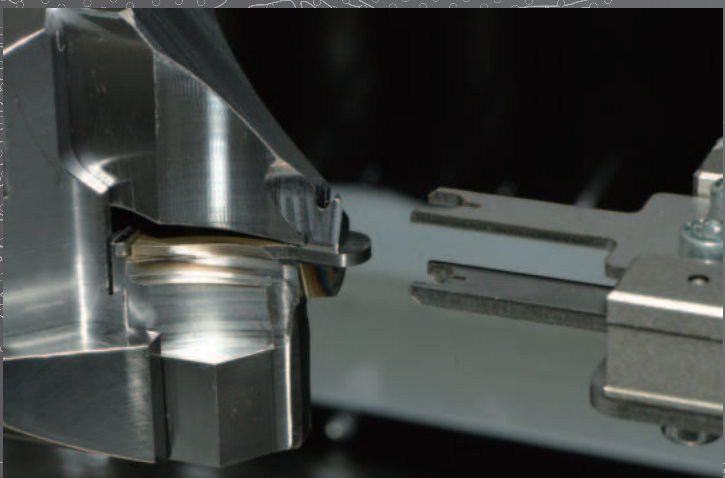
3 Dynamic Balancing

- Suitable for upgrading old tool holders (not restricted to brand).
- Tool holders purchased from abroad can be implanted with dynamic balancing.



25

CUTTING TOOLS SPECIALIST



Worldwide Sales & Distributions



HEADQUARTER
Taichung City, Taiwan



正河源股份有限公司
CHAIN HEADWAY CO.,LTD.



TEL /

+886-4-26265252



FAX /

+886-4-26267941



Email /

sales.tw@chain-headway.com



Address /

No. 232, Wuquan Rd., Qingshui Dist., Taichung City 436037, Taiwan



Website /

<https://chainheadway.com>



Website(EN)



LINE



WeChat



Facebook



YouTube